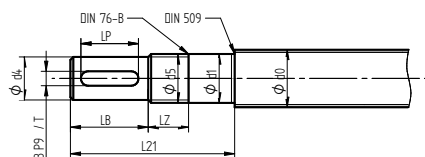
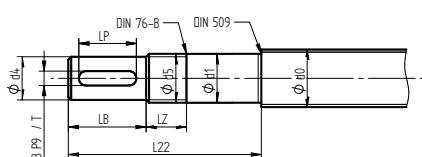
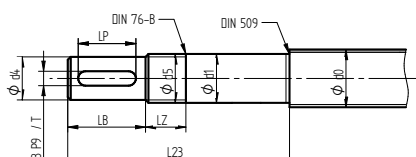


Ball screws Shaft ends

6.9 Standard shaft ends for bearing housings WBK and SBK

Driven end

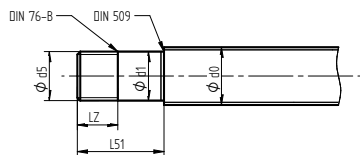
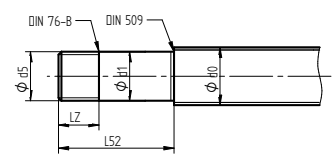
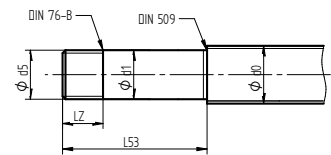
Type WS21 for
- WBK_DF
- SBK_DF

Type WS22 for
- WBK_DFD
- SBK_DFD

Type WS23 for
- WBK_DFF


Dimensional table of WS2 shaft ends for WBK and SBK bearing housing

Type	Bearing housing	d0	d1	d4	d5	L21	L22	L23	LB	LZ	LP	B x T
WS2_-15	WBK-15 -	20	15 h5	12 j6	M15x1	104	-	-	23	23	16	4x2.5
WS2_-17	WBK-17 -	25	17 h5	14 j6	M17x1	111	-	-	30	23	20	5x3.0
WS2_-20	WBK-20 -	25	20 h5	17 j6	M20x1	111	-	-	30	23	20	5x3.0
WS2_-25	WBK-25 SBK-25	32	25 h5	20 j6	M25x1.5	139	154	169	50	26	36	6x3.5
WS2_-30	WBK-30 SBK-25	40	30 h5	25 j6	M30x1.5	149	164	179	60	26	45	8x4.0
WS2_-35	WBK-35 SBK-35	40	35 h5	30 j6	M35x1.5	152	167	182	60	30	45	8x4.0
WS2_-40	WBK-40 SBK-40	50	40 h5	35 k6	M40x1.5	172	187	202	80	10	56	10x5.0

Dimensions in [mm]

Supported end

Type WS31 for
- WBK_DF
- SBK_DF

Type WS32 for
- WBK_DFD
- SBK_DFD

Type WS33 for
- WBK_DFF


Dimensional table of WS3 shaft ends for WBK and SBK bearing housing

Type	Bearing housing	d0	d1	d5	L51	L52	L53	LZ
WS3_-15	WBK-15 -	20	15 h5	M15x1	81	-	-	23
WS3_-17	WBK-17 -	25	17 h5	M17x1	81	-	-	23
WS3_-20	WBK-20 -	25	20 h5	M20x1	81	-	-	23
WS3_-25	WBK-25 SBK-25	32	25 h5	M25x1.5	89	104	119	26
WS3_-30	WBK-30 SBK-30	40	30 h5	M30x1.5	89	104	119	26
WS3_-35	WBK-35 SBK-35	40	35 h5	M35x1.5	92	107	122	30
WS3_-40	WBK-40 SBK-40	50	40 h5	M40x1.5	92	107	122	30

Dimensions in [mm]