

Ball screws Accessories

7.1 Nut housing GFD for flanged nuts acc. DIN69501 part 5

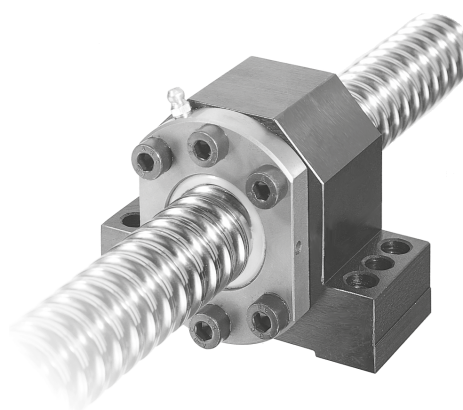
The nut housing is suitable for assembling flange nuts DEB, DDB and FSCDIN.

The axis height of the housing is matched to fixed bearing SFA and the supported bearing SLA.

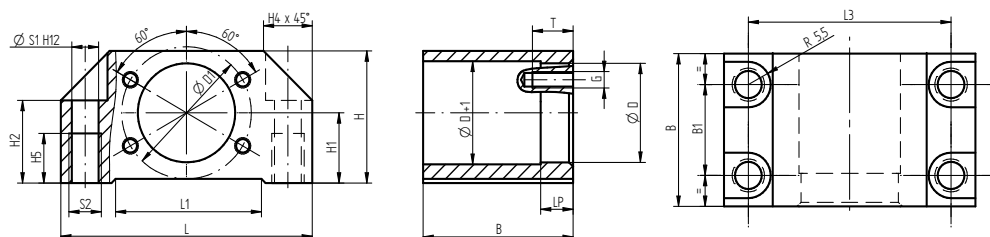
The housing can be screwed on from above (S1) and below (S2).

The housing GFD-16 ... 50 can be pinned with two tapered pins or cylindrical pins.

Screws of strength class 8.8 should be used for the fastening.



GFD-12

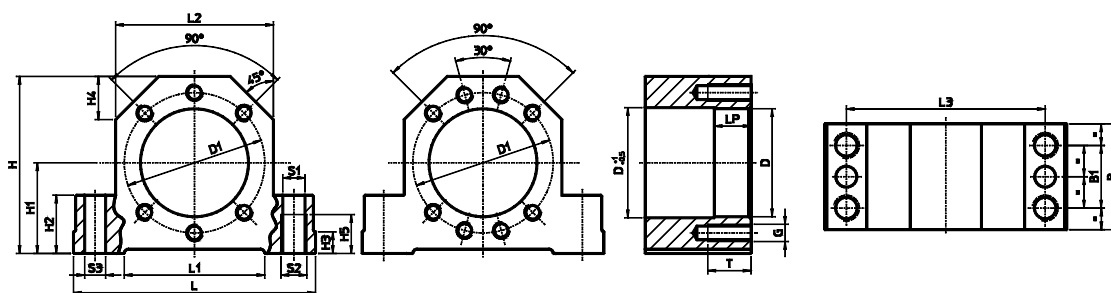


Hole pattern 0

Ball screw diameter	Type	L	L1	L2	L3	H	H1 JS7	H2	H3	H4	H5	D H8	D1	LP	B	B1	S1 H12	S2	S3	Hole pattern	G	T
12	GFD-12	62	36	-	50	32	17	20	-	12	12	24	32	8	37	22	6.6	M8	-	0	M4	10

Dimensions in [mm]

GFD-16 ... 50



Hole pattern 1

Hole pattern 2

Ball screw diameter	Type	L	L1	L2	L3	H	H1 JS7	H2	H3	H4	H5	D H8	D1	LP	B	B1	S1 H12	S2	S3	Hole pattern	G	T
16	GFD-16	86	52	52	68	58	32	22	7	15	15	28	38	10	37	23	8.4	M10	7.7	1	M5	12
20	GFD-20	94	52	60	77	64	34	22	7	17	15	36	47	16	42	25	8.4	M10	7.7	1	M6	15
25	GFD-25	108	65	66	88	72	39	27	10	19	18	40	51	16	46	29	10.5	M12	9.7	1	M6	15
32	GFD-32	112	65	72	92	82	42	27	10	19	18	50	65	16	49	29	10.5	M12	9.7	1	M8	20
40	GFD-40	126	82	84	105	97	50	32	13	23	21	63	78	16	53	32	12.6	M14	9.7	2	M8	20
50	GFD-50	146	82	104	125	115	60	32	13	30	21	75	93	16	59	34	12.6	M14	9.7	2	M10	25

Dimensions in [mm]