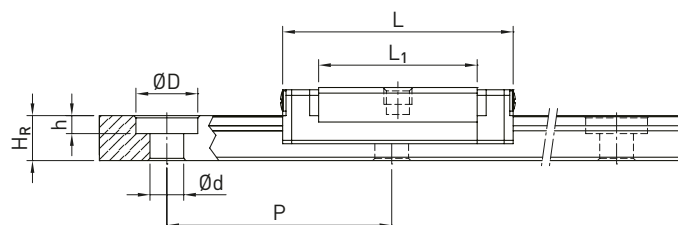
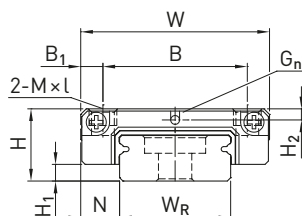


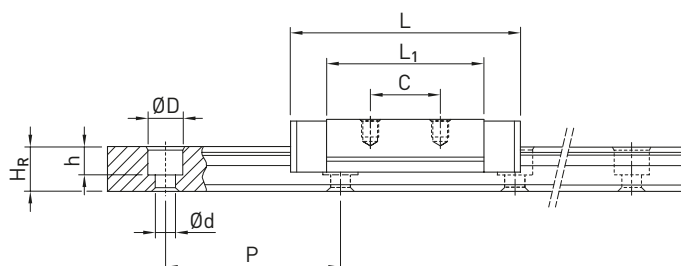
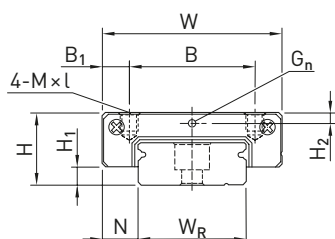
# Linear Guideways MG series

## 3.5.12.2 MGW

MGW05



MGW07, MGW09, MGW12



MGW15

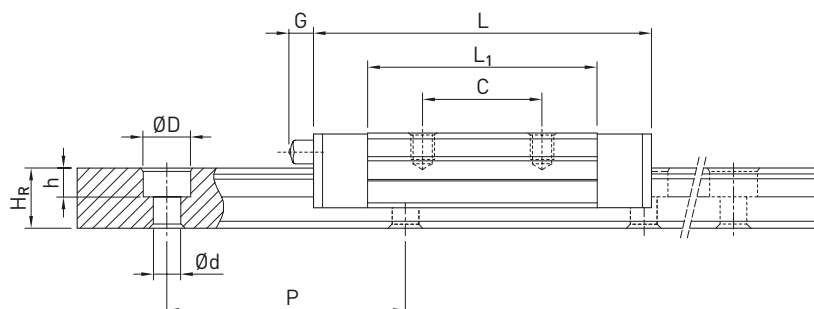
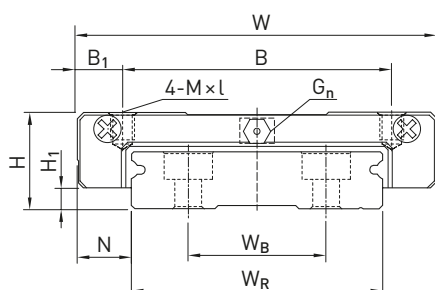


Table 3.89 Dimensions of the block

Series/ size	Installation dimensions [mm]			Dimensions of the block [mm]										Load ratings [N]		Weight [kg]
	H	H <sub>1</sub>	N	W	B	B <sub>1</sub>	C	L <sub>1</sub>	L	G	G <sub>n</sub>	M × l	H <sub>2</sub>	C <sub>dyn</sub>	C <sub>0</sub>	
MGW05C	6.5	1.5	3.5	17	13	2.0	—	14.1	20.5	—	Ø1.2	M2.5 × 1.5	1.00	680	1.180	0.02
MGW07C	9	1.9	5.5	25	19	3.0	10	21.0	31.2	—	Ø1.2	M3 × 3	1.85	1.370	2.060	0.02
MGW07H							19	30.8	41.0					1.770	3.140	0.03
MGW09C	12	2.9	6.0	30	21	4.5	12	27.5	39.3	—	Ø1.4	M3 × 3	2.40	2.750	4.120	0.04
MGW09H					23	3.5	24	38.5	50.7					3.430	5.890	0.06
MGW12C	14	3.4	8.0	40	28	6.0	15	31.3	46.1	—	Ø2	M3 × 3,6	2.80	3.920	5.590	0.07
MGW12H							28	45.6	60.4					5.100	8.240	0.10
MGW15C	16	3.4	9.0	60	45	7.5	20	38.0	54.8	5.2	M3	M4 × 4,2	3.20	6.770	9.220	0.14
MGW15H							35	57.0	73.8					8.930	13.380	0.22