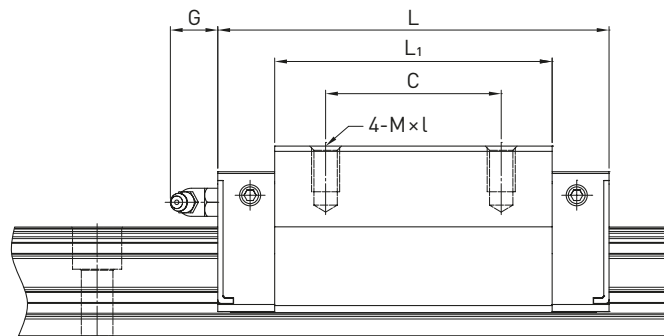
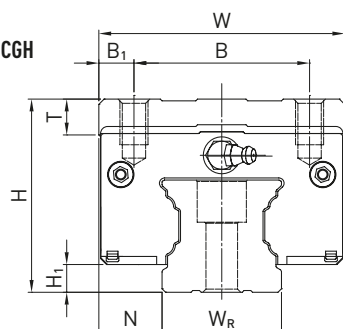


Lineární vedení Řada CG

3.3.9 Rozměry vozíků CG

3.3.9.1 CGH



Tabulka 3.48 Rozměry vozíku

Řada/ rozměr	Montážní rozměry [mm]			Rozměry vozíku [mm]													Únosnosti [N]		Hmot- nost [kg]
	H	H ₁	N	W	B	B ₁	C	L ₁	L	K ₂	G	M × l	T	H ₂	H ₃	C _{dyn}	C ₀		
CGH15CA	28	4.1	9.5	34	26	4.0	26	39.6	58.2	4.25	6.0	M4 × 6	6.0	7.8	7.8	14.700	19.520	0.15	
CGH20CA	30	4.6	12.0	44	32	6.0	36	52.5	74.9	5.50	6.0	M5 × 6	8.0	3.7	3.5	23.700	30.510	0.25	
CGH20HA							50	68.5	90.9							28.600	39.900	0.33	
CGH25CA	40	6.1	12.5	48	35	6.5	35	61.0	84.0	5.00	12.0	M6 × 8	8.0	10.0	9.5	34.960	43.940	0.46	
CGH25HA							50	78.4	101.4							40.500	54.080	0.59	
CGH30CA	45	7.0	16.0	60	40	10.0	40	69.0	97.4	8.70	12.0	M8 × 10	9.5	9.7	10.0	46.000	55.190	0.71	
CGH30HA							60	91.5	119.9							58.590	78.180	0.94	
CGH35CA	55	7.6	18.0	70	50	10.0	50	79.0	111.4	7.00	12.0	M8 × 13	10.2	16.0	14.0	61.170	79.300	1.24	
CGH35HA							72	103.4	135.8							77.900	112.340	1.62	
CGH45CA	70	9.7	20.5	86	60	13.0	60	97.2	137.6	8.70	12.9	M10 × 17	16.0	18.5	18.2	98.430	112.660	2.38	
CGH45HA							80	133.6	174.0							125.580	159.600	3.01	

