

Ball screws

Bearing housings

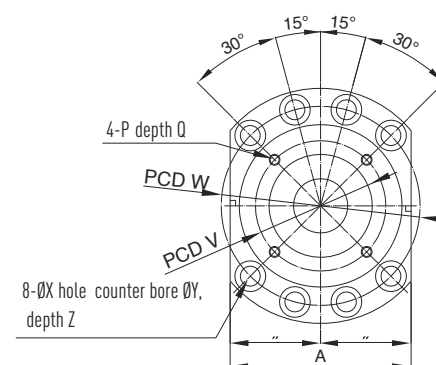
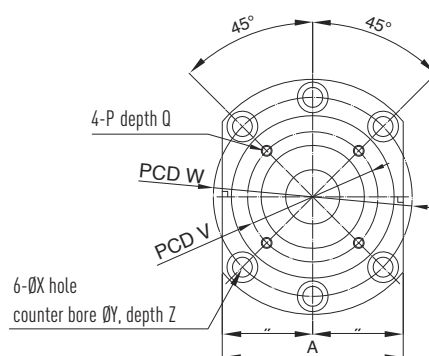
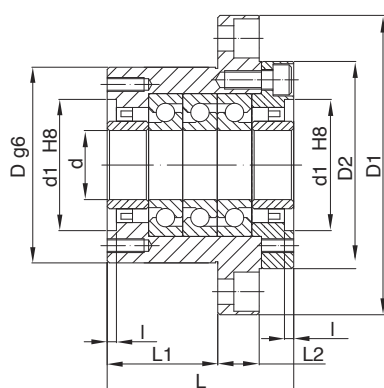
5.9 WBK bearing housings for high load

Thanks to their robust steel bearing housing, the flange bearing units of the WBK series are especially suited to use in heavy-duty ballscrews. Depending on the axial loads present, the WBK bearing units are available with the DF, DFD and DFF bearing arrangements.

The end machining processes suited to the WBK fixed bearing are types WS2 and WS3.

High load bearing set WBK includes:

- Steel bearing housing
- Angular contact ball bearing (2, 3 or 4 pcs)
- Spacer (2 pcs)
- Lock nut



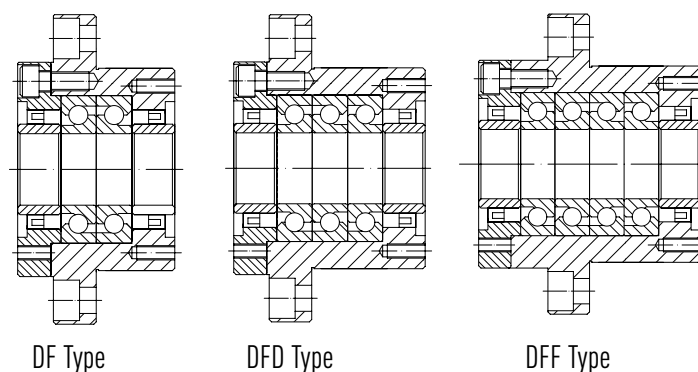
Type	Ball screw size	d	D	D1	D2	L	L1	L2	A	W	X	Y	Z	d1	l	V	P	Q
WBK-15-DF	20	15	70	106	72	60	32	15	80	88	9	14	8.5	45	3	58	M5	10
WBK-17-DF	25	17	70	106	72	60	32	15	80	88	9	14	8.5	45	3	58	M5	10
WBK-20-DF	25	20	70	106	72	60	32	15	80	88	9	14	8.5	45	3	58	M5	10
WBK-25-DF	32	25	85	130	90	66	33	18	100	110	11	17.5	11	57	4	70	M6	12
WBK-25-DFD	32	25	85	130	90	81	48	18	100	110	11	17.5	11	57	4	70	M6	12
WBK-25-DFF	32	25	85	130	90	96	48	18	100	110	11	17.5	11	57	4	70	M6	12
WBK-30-DF	40	30	85	130	90	66	33	18	100	110	11	17.5	11	57	4	70	M6	12
WBK-30-DFD	40	30	85	130	90	81	48	18	100	110	11	17.5	11	57	4	70	M6	12
WBK-30-DFF	40	30	85	130	90	96	48	18	100	110	11	17.5	11	57	4	70	M6	12
WBK-35-DF	40	35	95	142	102	66	33	18	106	121	11	17.5	11	69	4	80	M6	12
WBK-35-DFD	40	35	95	142	102	81	48	18	106	121	11	17.5	11	69	4	80	M6	12
WBK-35-DFF	40	35	95	142	102	96	48	18	106	121	11	17.5	11	69	4	80	M6	12
WBK-40-DF	50	40	95	142	102	66	33	18	106	121	11	17.5	11	69	4	80	M6	12
WBK-40-DFD	50	40	95	142	102	81	48	18	106	121	11	17.5	11	69	4	80	M6	12
WBK-40-DFF	50	40	95	142	102	96	48	18	106	121	11	17.5	11	69	4	80	M6	12

Dimensions in [mm]

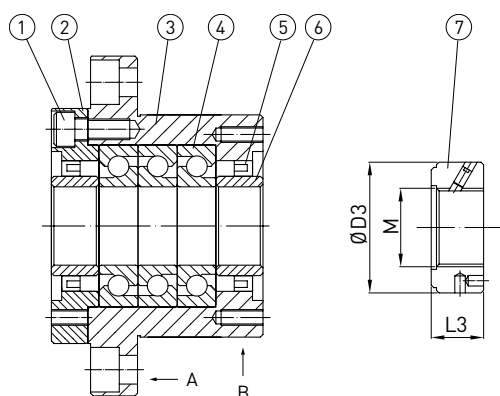
Ball screws

Bearing housings

Bearing arrangements



Bearing structure



(1) Mounting bolt, (2) Bearing cover, (3) Bearing housing, (4) Bearing, (5) Seal, (6) Spacer, (7) Lock nut

Note:

1. Use reference planes A and B for alignment during assembly.
2. To ensure high accuracy, parts 1 – 6 may not be disassembled..

Type	Dynamic capacity [kN]	Max. axial force [kN]	Preload [kN]	Axial rigidity [N/μm]	Starting torque [Nm]	Lock nut			Weight [kg]
						M	D3	L3	
WBK-15-DF	21.9	26.6	2.15	750	0.19	M15x1	30	14	1.20
WBK-17-DF	22.4	27.1	2.20	750	0.19	M17x1	37	18	1.24
WBK-20-DF	22.4	27.1	2.20	750	0.19	M20x1	40	18	2.0
WBK-25-DF	29.1	41.5	3.20	1000	0.29	M25x1.5	45	20	3.3
WBK-25-DFD	4.7	83.0	4.40	1500	0.40	M25x1.5	45	20	3.8
WBK-25-DFF	4.7	83.0	6.40	2000	0.50	M25x1.5	45	20	4.5
WBK-30-DF	29.8	44.0	3.40	1050	0.30	M30x1.5	50	20	3.2
WBK-30-DFD	48.5	88.0	4.60	1550	0.40	M30x1.5	50	20	3.7
WBK-30-DFF	48.5	88.0	6.80	2050	0.52	M30x1.5	50	20	4.3
WBK-35-DF	31.5	51.0	3.90	1200	0.35	M35x1.5	55	22	3.8
WBK-35-DFD	51.5	102.0	5.30	1750	0.46	M35x1.5	55	22	4.5
WBK-35-DFF	51.5	102.0	7.80	2400	0.60	M35x1.5	55	22	5.2
WBK-40-DF	32.5	53.0	4.00	1250	0.37	M40x1.5	60	22	3.7
WBK-40-DFD	52.5	106.0	5.40	1850	0.47	M40x1.5	60	22	4.2
WBK-40-DFF	52.5	106.0	8.00	2450	0.62	M40x1.5	60	22	5.0

Dimensions in [mm]