

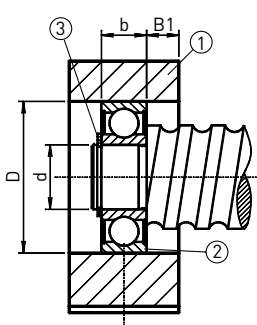
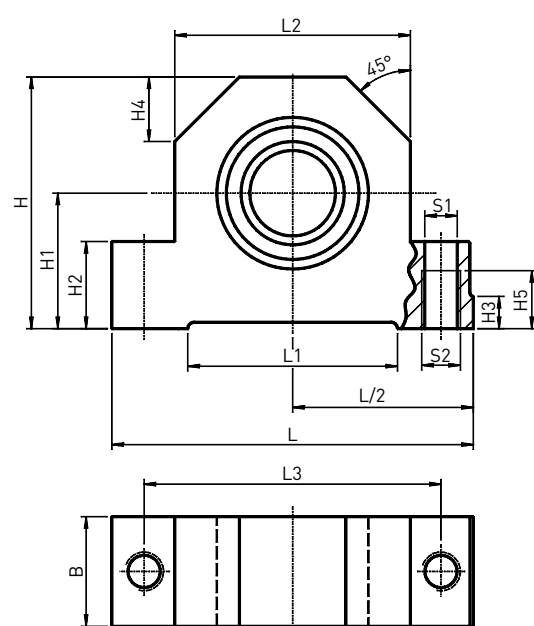
# Ball screws Bearing housings

## 5.2 Simple bearing housing type SLA

Precise bearing housings SLA are recommended for peeled and ground ball screws.

Simple bearing housing SLA includes:

- Steel housing
- Radial bearing
- Circlip



(1) Steel housing, (2) Radial bearing, (3) Circlip

The axis height of the supported bearing is matched to fixed bearing SFA and nut housing GFD. The housing can be screwed on from above (S1) and below (S2).

The reference edge makes it easier to align the unit. The end machining suited to the supported bearing is the S5-xx or S1-xx type.

Ball screw size	Type	L	L1	L2	L3	H	H1 JS7	H2	H3	H4	H5	b	B	B1	S1 H12	S2	d	D J6	Circlip DIN 471	Radial bearing DIN 623
12	SLA-06	62	34	38	50	41	22	13	5	11	9	6	15	4.5	5.3	M6	6	19	6x0.7	626.2RS
16	SLA-10	86	52	52	68	58	32	22	7	15	15	9	24	7.5	8.4	M10	10	30	10x1.0	6200.2RS
20	SLA-12	94	52	60	77	64	34	22	7	17	15	10	26	8.0	8.4	M10	12	32	12x1.0	6201.2RS
25	SLA-17	108	65	66	88	72	39	27	10	19	18	12	28	8.0	10.5	M12	17	40	17x1.0	6203.2RS
32	SLA-20	112	65	72	92	78	42	27	10	20	18	14	34	10.0	10.5	M12	20	47	20x1.2	6204.2RS
40	SLA-30	126	82	84	105	92	50	32	13	23	21	16	38	11.0	12.6	M14	30	62	30x1.5	6206.2RS
50	SLA-40	146	82	104	125	112	60	32	13	30	21	18	44	13.0	12.6	M14	40	80	40x1.75	6208.2RS

Dimensions in [mm]