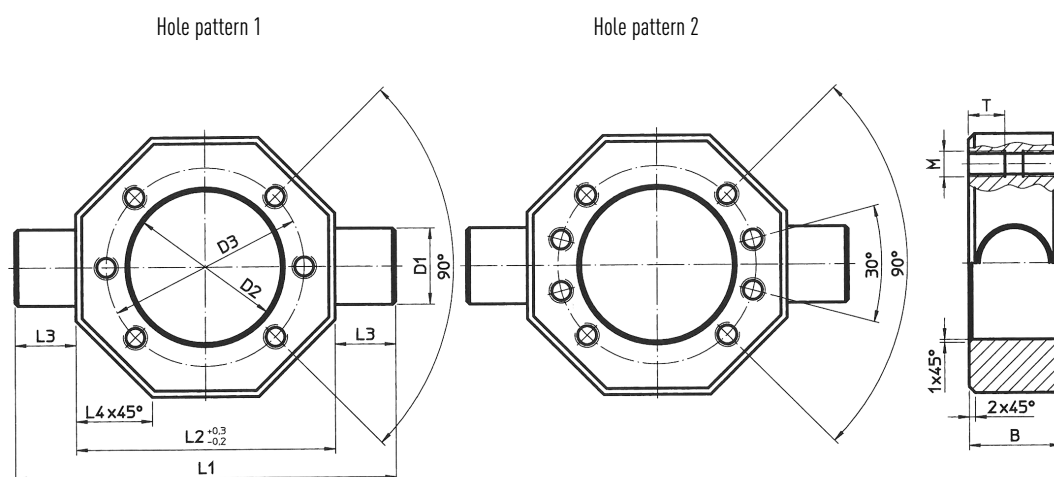
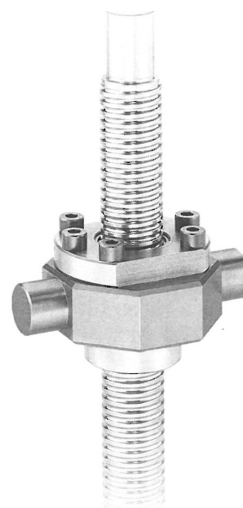


Ball screws Accessories

7.2 Cardnic nut housings GKD for flanged nut



Cardanic nut housings for nuts acc. DIN69051 part 5



Ball screw diameter	Type	L1	L2	L3	L4	B	D1 f8	D2 H7	D3	Hole pattern	M	T	Weight [kg/ks]
16	GKD-16	70	50	10	15	20	12	28	38	1	M5	10	0.2
20	GKD-20	85	58	13.5	17	25	16	36	47	1	M6	12	0.3
25	GKD-25	95	65	15	19	25	18	40	51	1	M6	12	0.4
32	GKD-32	125	85	20	25	30	25	50	65	1	M8	12	0.9
40	GKD-40	140	100	20	29	40	30	63	78	2	M8	14	1.7
50	GKD-50	165	115	25	34	50	40	75	93	2	M10	16	2.6

Dimensions in [mm]