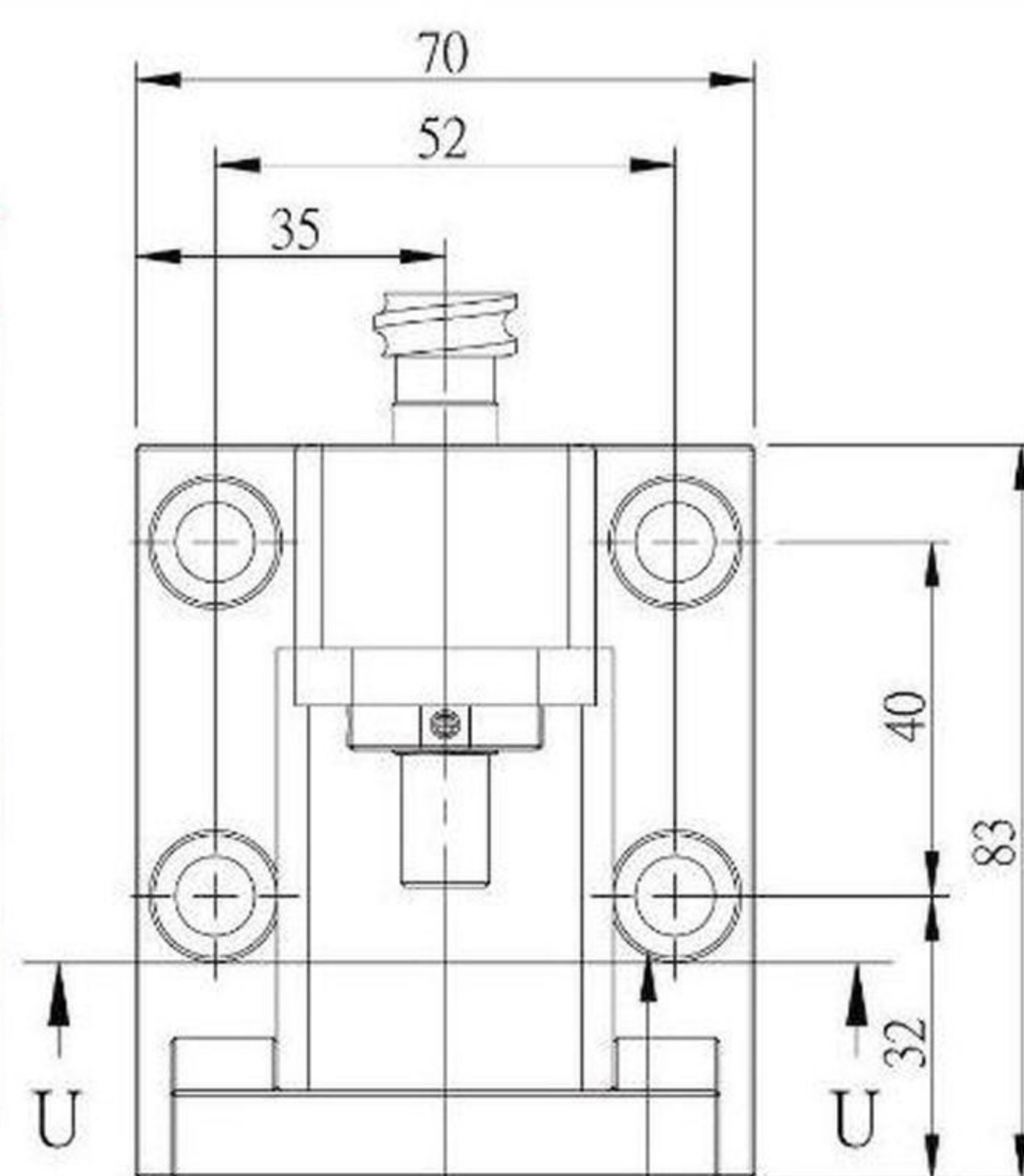
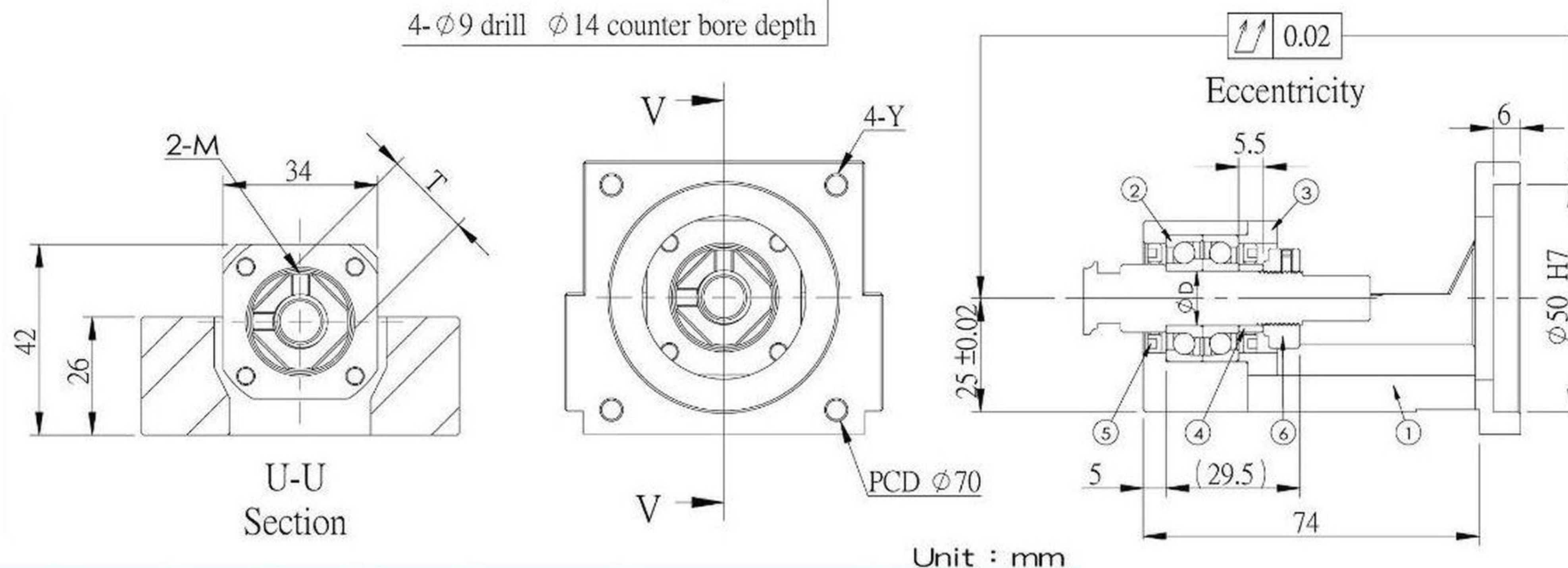


# MBCE10-12

No.	Part name	Qty
1	Housing	1
2	Bearing	1 set
	MBCE10 with bearings 7000	
	MBCE12 with bearings 7001	
3	Holding lid	1
4	Collar	2
5	Seal	2
6	Lock nut	1set
7	Cushion Stopper (option)	1



Surface treatment:  
Black Oxide / Electroless Nickel Plating



Model No.	φ D	T	M	Y	Weight (Kgs)	Support unit	Suggest Coupling
						Supported-side	
MBCE10-D	10	□16	M3	M5	-	EF10 AF 10	SGS 34C
MBCE10-DP				M4	-		
MBCE12-D	12	□19	M4	M5	0.84	EF12 AF 12	
MBCE12-DP				M4	0.86		

Note :

1.Bearings made preload , and axial clearance is 0 mm.

2.DF type, P5 grade preloaded duplex angular contact ball bearing suitable for ballscrew use.

