

Linear Guideways

HG/QH series

3.1.10 Dimensions of the HG rail

The HG rails are used for both the HG and QH blocks.

3.1.10.2 Dimensions of HGR_T

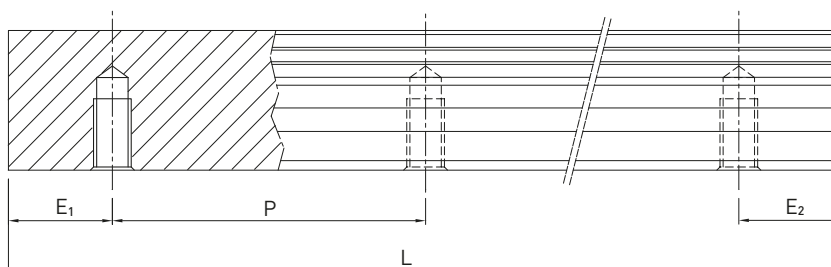
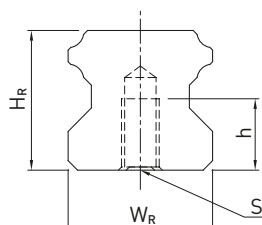


Table 3.10 Dimensions of rail HGR_T

Series/ size	Dimensions of rail [mm]					Max. length [mm]	Max. length $E_1 = E_2$ [mm]	Min. length [mm]	$E_{1/2}$ min [mm]	$E_{1/2}$ max [mm]	Weight [kg/m]
	W_R	H_R	S	h	P						
HGR15T	15	15.0	M5	8	60	4.000	3.900	132	6	54	1.48
HGR20T	20	17.5	M6	10	60	4.000	3.900	134	7	53	2.29
HGR25T	23	22.0	M6	12	60	4.000	3.900	136	8	52	3.35
HGR30T	28	26.0	M8	15	80	4.000	3.920	178	9	71	4.67
HGR35T	34	29.0	M8	17	80	4.000	3.920	178	9	71	6.51
HGR45T	45	38.0	M12	24	105	4.000	3.885	234	12	93	10.87
HGR55T	53	44.0	M14	24	120	4.000	3.840	268	14	106	15.67
HGR65T	63	53.0	M20 ¹⁾	30	150	4.000	3.750	330	15	135	21.73

¹⁾ Deviating from DIN 645

Note:

1. The tolerance for E is +0.5 to -1 mm for standard rails and 0 to -0.3 mm for joints.
2. If the $E_{1/2}$ dimensions are not indicated, the maximum possible number of mounting holes will be determined under consideration of $E_{1/2}$ min.
3. The rails are shortened to the required length. If the $E_{1/2}$ dimensions are not indicated, these will be carried out symmetrically.