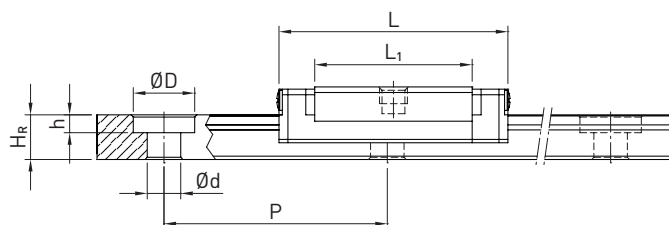
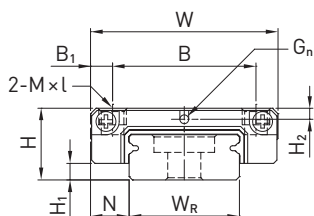


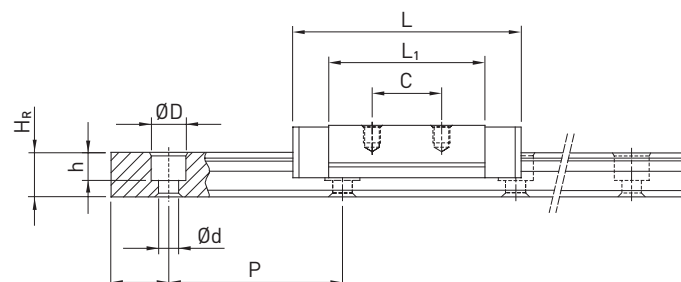
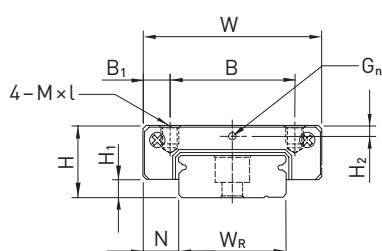
Lineární vedení Řada MG

3.5.12.2 MGW

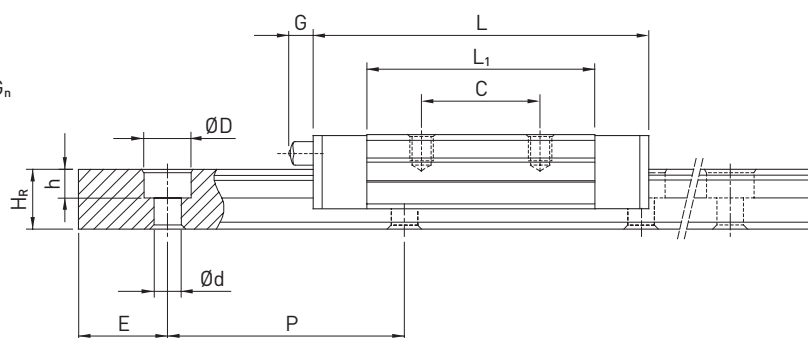
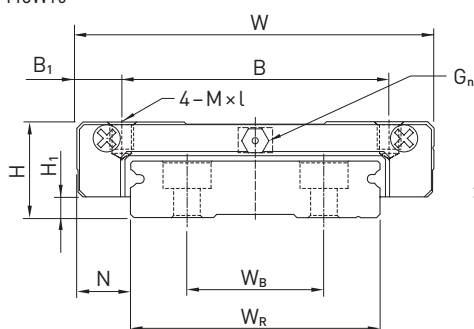
MGW05



MGW07, MGW09, MGW12



MGW15



Tabulka 3.89 Rozměry vozíku

Řada/ rozměr	Montážní rozměry [mm]			Rozměry vozíku [mm]										Únosnosti [N]		Hmot- nost [kg]
	H	H ₁	N	W	B	B ₁	C	L ₁	L	G	G _n	M × l	H ₂	C _{dyn}	C ₀	
MGW05C	6.5	1.5	3.5	17	13	2.0	—	14.1	20.5	—	Ø 0.8	M2,5 × 1,5	1.00	680	1,180	0.02
MGW07C	9	1.9	5.5	25	19	3.0	10	21.0	31.2	—	Ø 1.2	M3 × 3	1.85	1,370	2,060	0.02
MGW07H							19	30.8	41.0					1,770	3,140	0.03
MGW09C	12	2.9	6.0	30	21	4.5	12	27.5	39.3	—	Ø 1.4	M3 × 3	2.40	2,750	4,120	0.04
MGW09H					23	3.5	24	38.5	50.7					3,430	5,890	0.06
MGW12C	14	3.4	8.0	40	28	6.0	15	31.3	46.1	—	Ø 2	M3 × 3,6	2.80	3,920	5,590	0.07
MGW12H							28	45.6	60.4					5,100	8,240	0.10
MGW15C	16	3.4	9.0	60	45	7.5	20	38.0	54.8	5.2	M3	M4 × 4,2	3.20	6,770	9,220	0.14
MGW15H							35	57.0	73.8					8,930	13,380	0.22