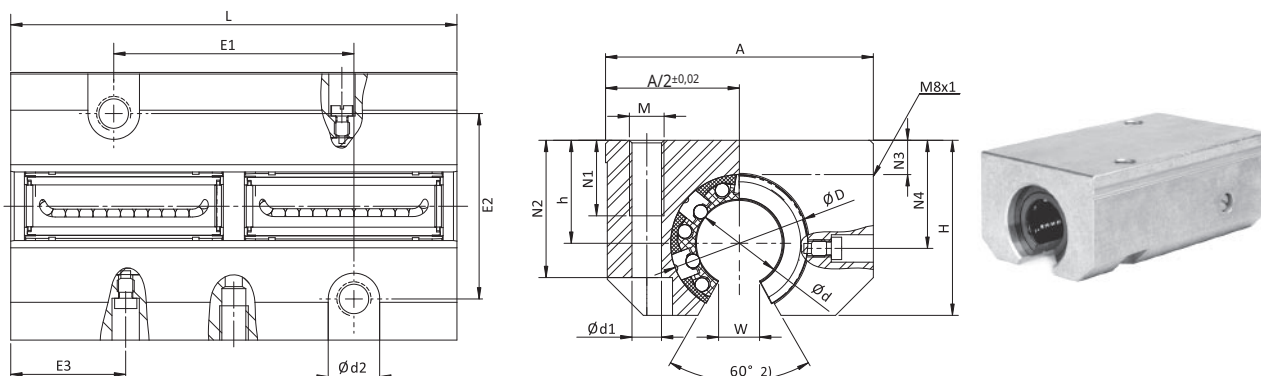


## TAG-OP



### Tandem linear set

#### Optional additional sealings

Type	Dimensions [mm]																	Capacity [N]		Weight [kg]
	Ød	ØDH6	A	H	h 1)	L	E1 1)	E2 1)	E3 2)	Ød1	Ød2	N1	N2	N3	N4	M	W	C <sub>d</sub>	C <sub>o</sub>	
TAG-OP-12-KS	12	22	43	30	18	76	40	30	19,5	5,2	10	13	25	8	16,65	M6	7,5	1660	1820	0,220
TAG-OP-16-KS	16	26	53	35	22	84	45	36	21,5	5,2	10	13	30	12	22,0	M6	10,0	2040	2240	0,340
TAG-OP-20-KS	20	32	60	42	25	104	55	45	27	6,8	11	18	24	13	25,0	M8	10,0	4040	4440	0,620
TAG-OP-25-KS	25	40	78	51	30	130	70	54	33,5	8,6	15	22	40	15	31,5	M10	12,5	7900	8700	1,170
TAG-OP-30-KS	30	47	87	60	35	152	85	62	39,5	10,3	18	26	48	16	33,0	M12	12,0	9600	10560	1,680
TAG-OP-40-KS	40	62	108	77	45	176	100	80	45,0	14,0	20	34	60	20	43,5	M16	16,8	16480	18120	3,150
TAG-OP-50-KS	50	75	132	88	50	224	125	100	56,5	14,0	20	34	49	20	47,5	M16	21,0	24120	26540	3,900

Fastening of the bushing in the body by rings acc. DIN 472.

1) +0,01 / -0,02

2) ±0,20

Order code:

tandem linear set TAG-OP, open

shaft diameter

K – ball bushing LME  
V – steel ball bushing SDE  
KS – ball bushing super with/without self-aligning  
S – heavy load ball bushing SSE

additional sealing

TAG-OP

Ø

KS

V