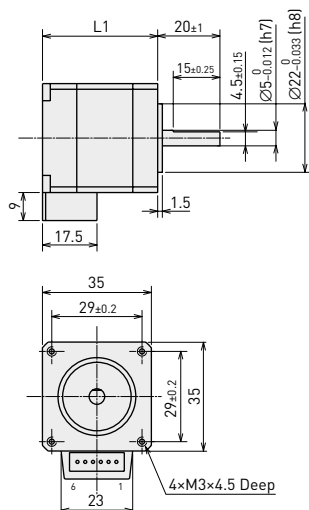


Polohovací systémy

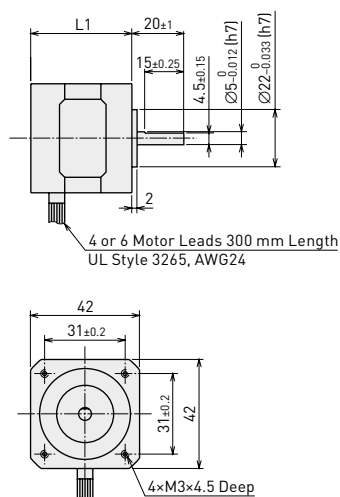
Servomotory a krokové motory

KK40 / krokový motor

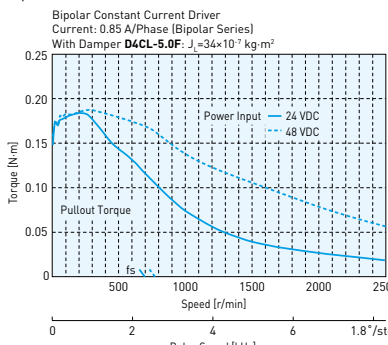
Serie PK23



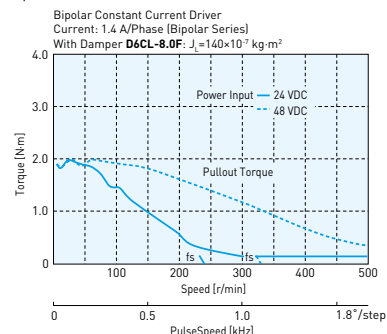
Serie PK24



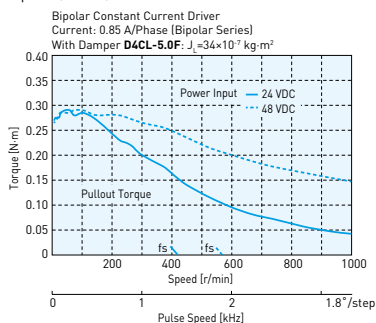
PK233PA
Bipolar (Series)



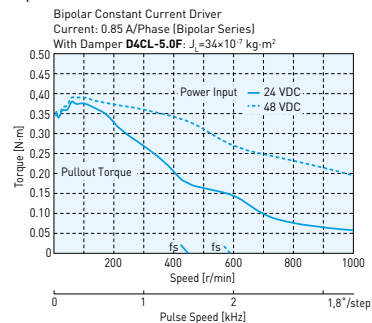
PK267JA
Bipolar (Series)



PK244-01A
Bipolar (Series)



PK245-01A
Bipolar (Series)



Typ motoru	Točivý moment [Nm]	Proud/ fáze [A]	Napětí [V]	Odpor/ fáze [Ω]	Indukčnost/ fáze [mH]	Moment setrvačnosti [kgm²]	Hmotnost [kg]	Délka L1 [mm]	Příruba
PK233PA	0,20	0,85	4,6	5,4	5,6	24×10^{-7}	0,18	37	KK40-Fx
PK243-01A	0,20	0,67	5,6	8,4	10,0	35×10^{-7}	0,21	33	KK40-F3
PK244-01A	0,33	0,85	5,6	6,6	12,8	54×10^{-7}	0,27	39	KK40-F3
PK245-01A	0,43	0,85	5,6	6,6	11,2	68×10^{-7}	0,35	47	KK40-F3