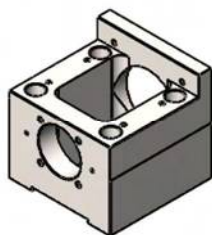


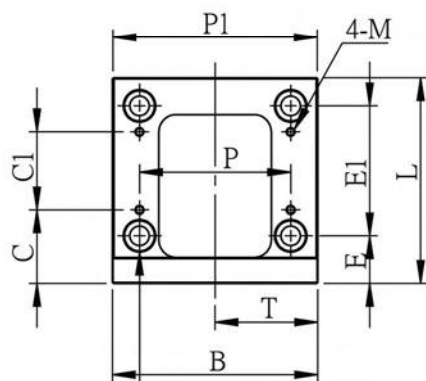
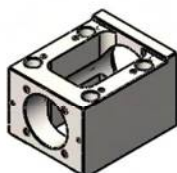
# Motor Bracket MBH



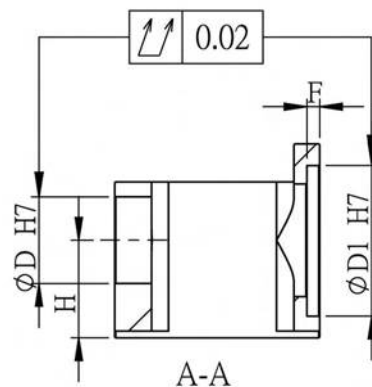
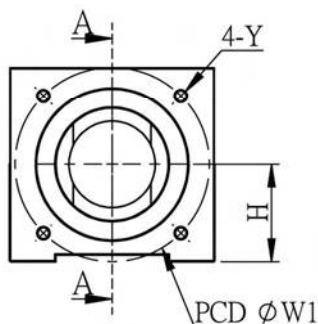
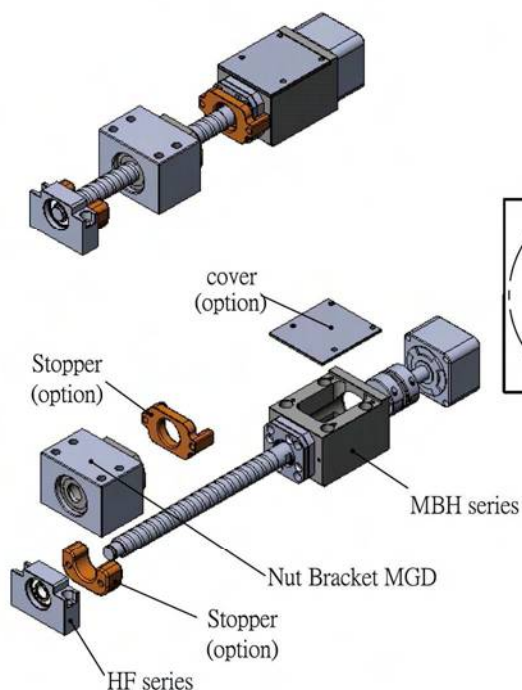
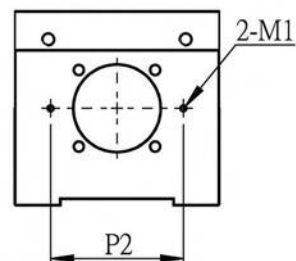
Pattern:MBH15-EP



Pattern:MBH15-D



4孔  $\phi S$  drill  $\phi Q$  counter bore depth



Unit : mm

Model No	D1	W1	Y	L	D	H ±0.02	B	T	P	S	Q	E
MBH15-D	50	70	M5	88	40	30	70	35	54	6.6	11	23
MBH15-DP			M4									
MBH15-E	70	90	M6	95	40	45	95	47.5	70	9	14	22
MBH15-EP			M5		50							
MBH15H-EP												

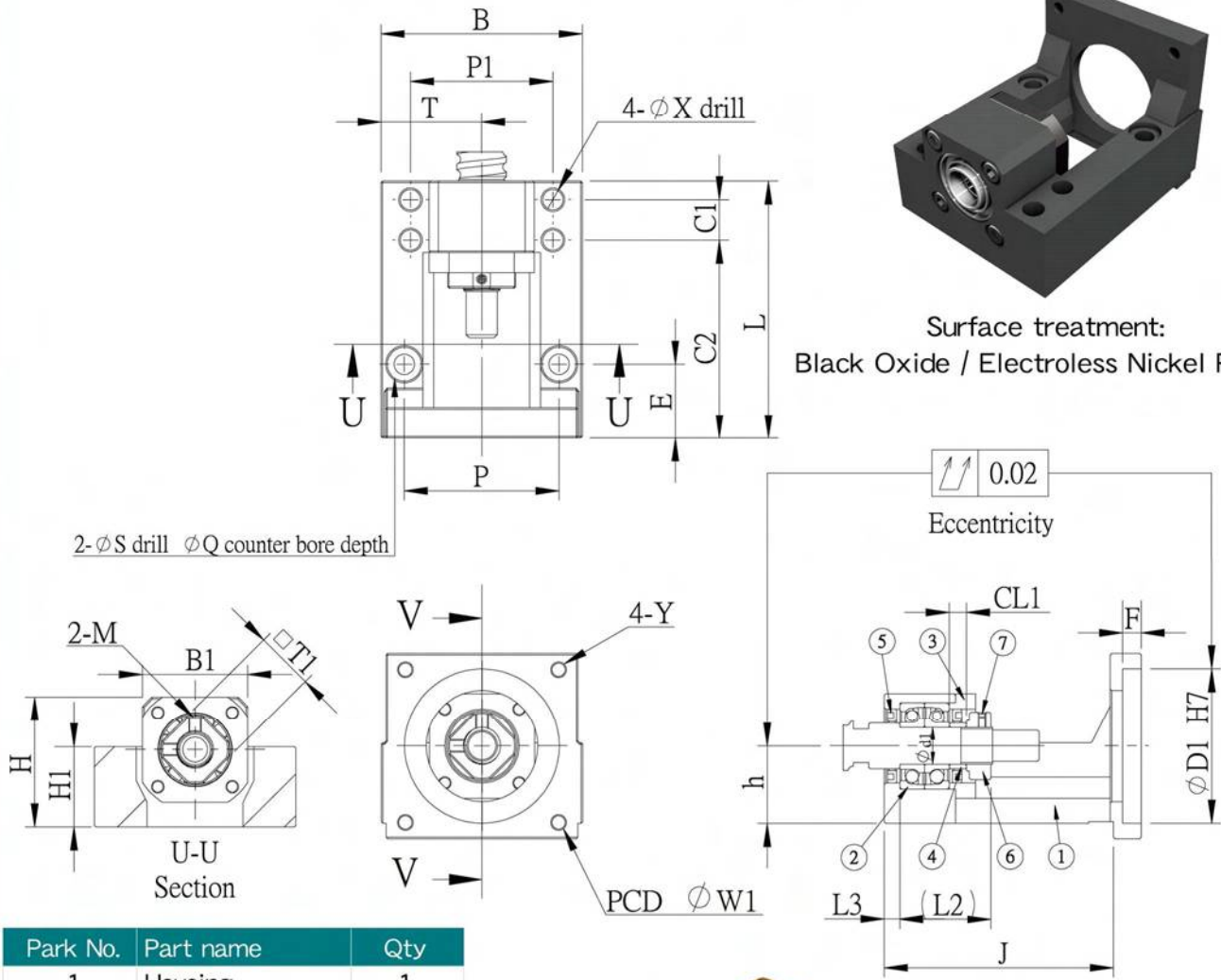
Model No	E1	P1	M	C	C1	M1	P2	F	Weight (Kgs)	Support unit		Suggest Coupling
										Fixed-side	Supported-side	
MBH15-D	50	-	M4	33	30	M3	61.5	5	-	FK 15	HF 15	SGS 34C SGS 40C
MBH15-DP									1.09			
MBH15-E	60	94.6	M4	34	36	M3	61.5	6	-	FK 15	HF 15H	SGS 45C SGS 50C
MBH15-EP									-			
MBH15H-EP						-	FKA15H	SGB 50C				

※Under development

# Motor Bracket MBCB12



Surface treatment:  
Black Oxide / Electroless Nickel Plating



Park No.	Part name	Qty
1	Housing	1
2	7001A Bearing	1 set
3	Holding lid	1
4	Collar	2
5	Seal	2
6	Lock nut	1set



Unit : mm

Model No	D1	W1	Y	L	$h$ $\pm 0.02$	B	P	T	Shaft diameter d1	CL1	L2	L3	H	H1	B1	P1
MBCB12-D	50	70	M5	83	25	65	50	32.5	12	5.5	29.5	5	42	26	34	46
MBCB12-DP			M4													

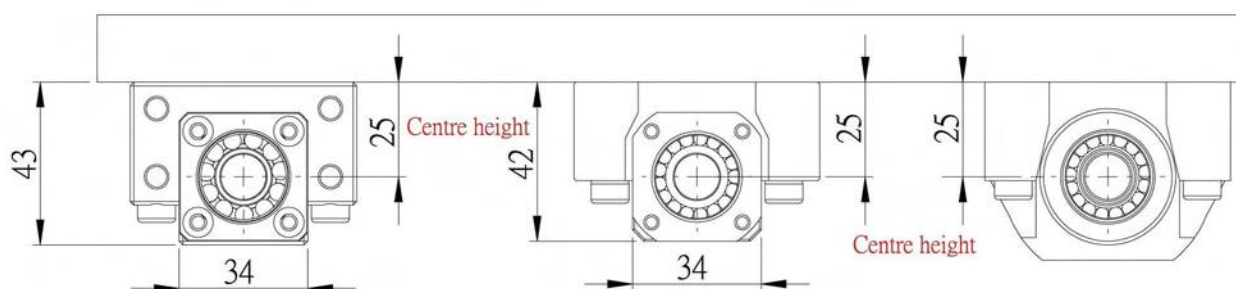
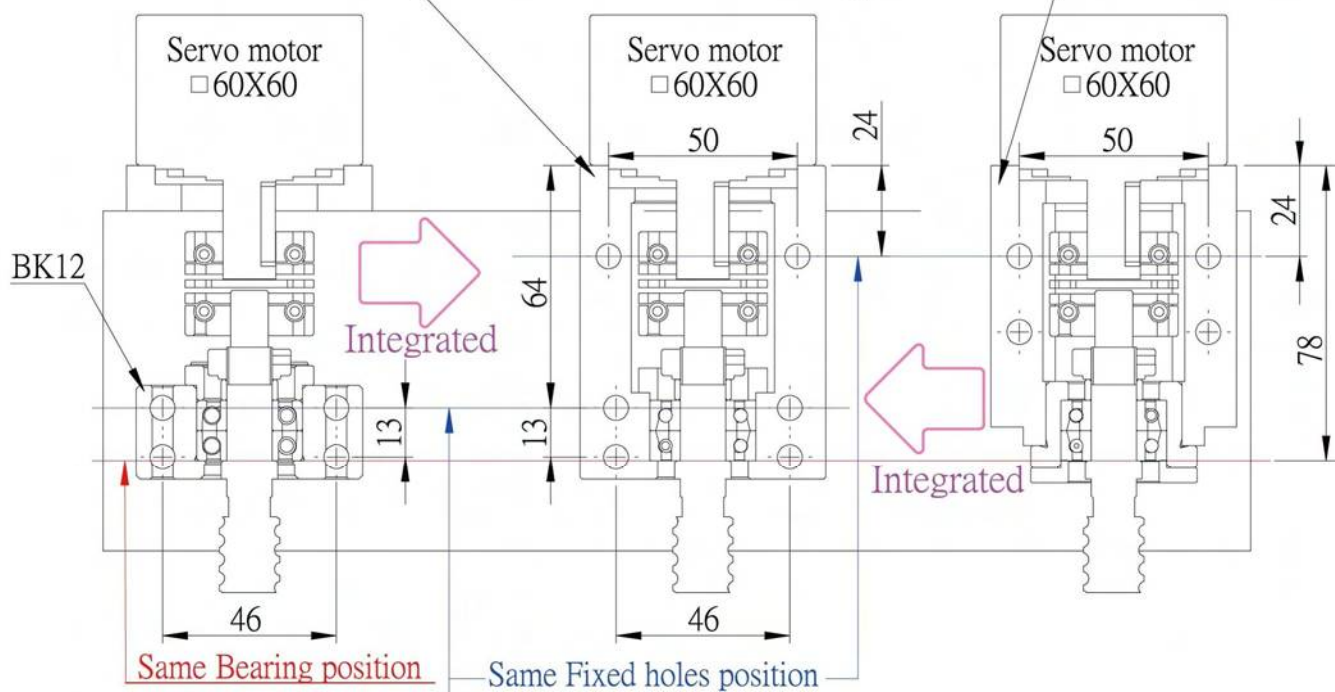
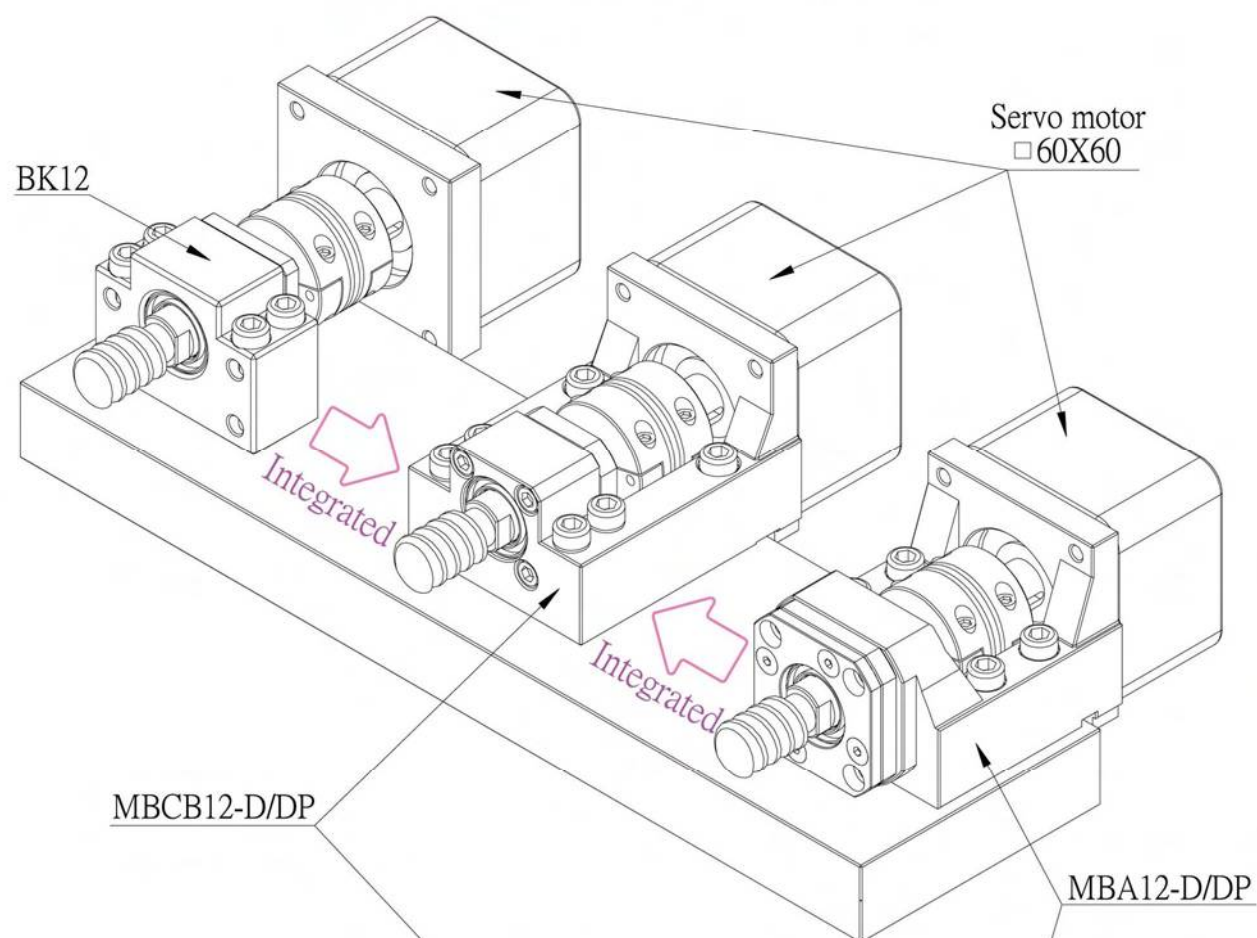
Model No	S	Q	E	X	C1	C2	F	J	M	T1	Weight (Kgs)	Support unit Supported-side	Suggest Coupling
MBCB12-D	6.6	11	24	6.6	13	64	6	74	M4	19	0.79	BF12	SGS 34C
MBCB12-DP											0.79		

Note :

1.Bearings made preload , and axial clearance is 0 mm.)

2.DF type, P5 grade preloaded duplex angular contact ball bearing suitable for ballscrew use.

Without Change, directly update.

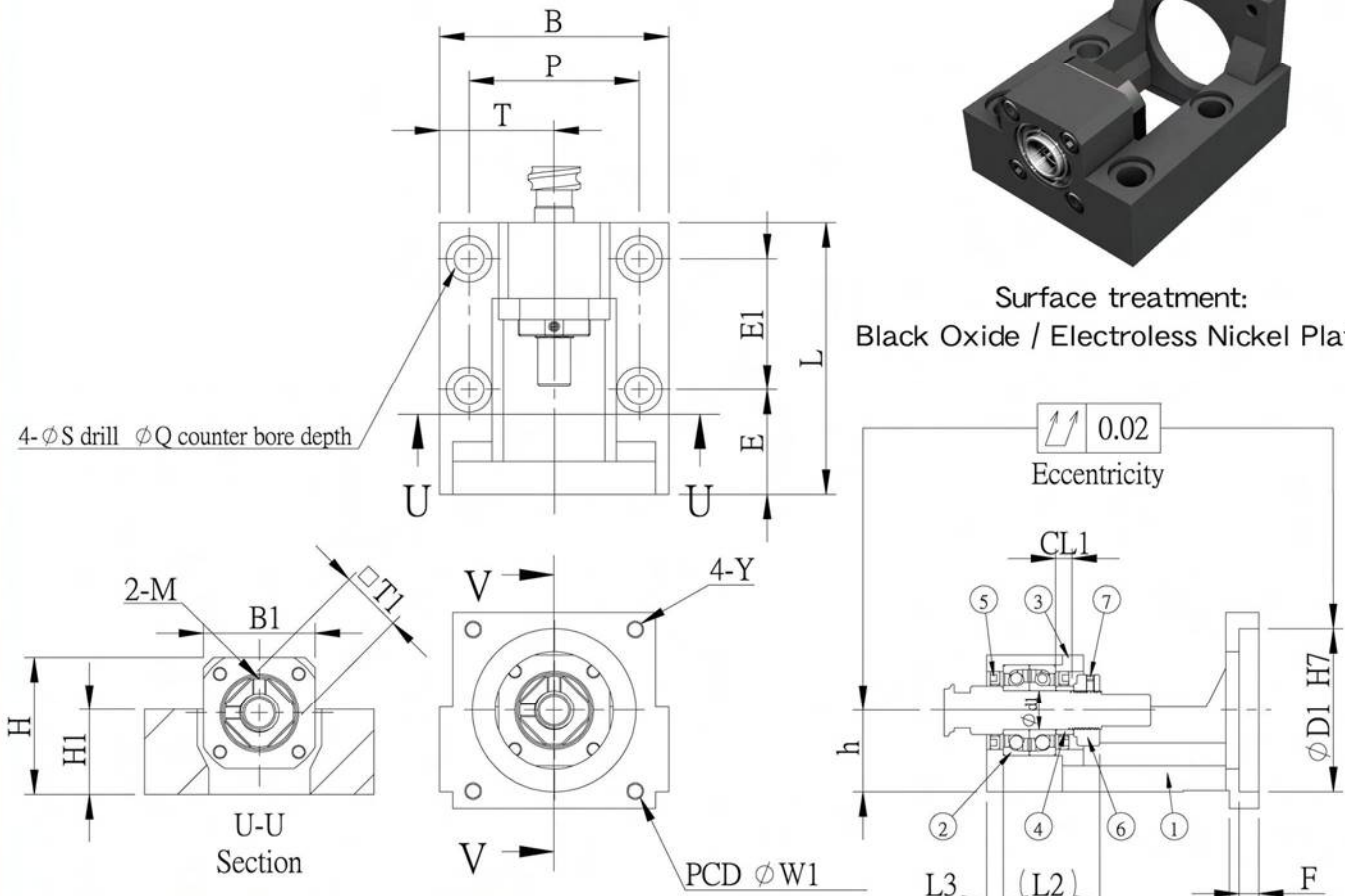




# Motor Bracket MBCE12



Surface treatment:  
Black Oxide / Electroless Nickel Plating



Park No.	Part name	Qty
1	Housing	1
2	7001A Bearing	1 set
3	Holding lid	1
4	Collar	2
5	Seal	2
6	Lock nut	1set



Unit : mm

Model No	D1	W1	Y	L	$h_{\pm 0.02}$	B	P	T	Shaft diameter d1	CL1	L2	L3	H	H1	B1
MBCE12-D	50	70	M5	83	25	70	52	35	12	5.5	29.5	5	42	26	34
MBCE12-DP			M4												

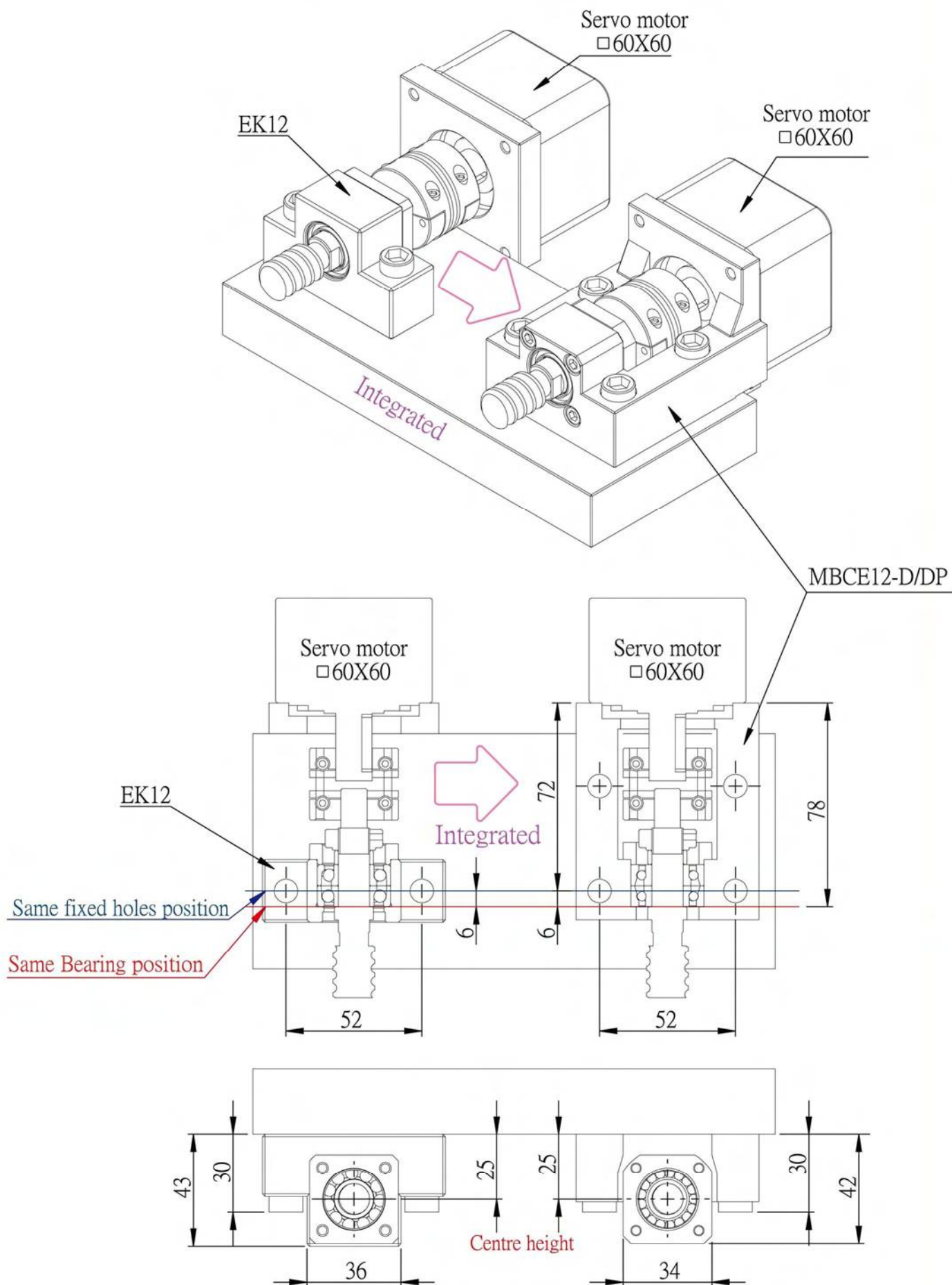
Model No	S	Q	E	E1	F	J	M	T1	Weight (Kgs)	Support unit	Suggest Coupling
										Supported-side	
MBCE12-D	9	14	32	40	6	74	M4	19	0.84	EF12 AF 12	SGS 34C
MBCE12-DP									0.86		

Note :

1.Bearings made preload , and axial clearance is 0 mm.

2.DF type, P5 grade preloaded duplex angular contact ball bearing suitable for ballscrew use.

Without Change, directly update.

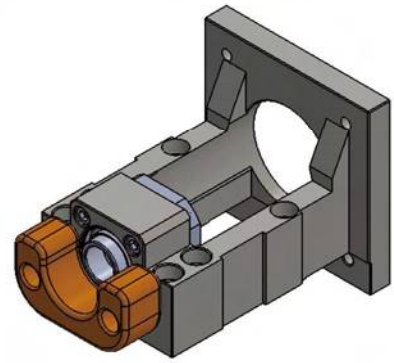
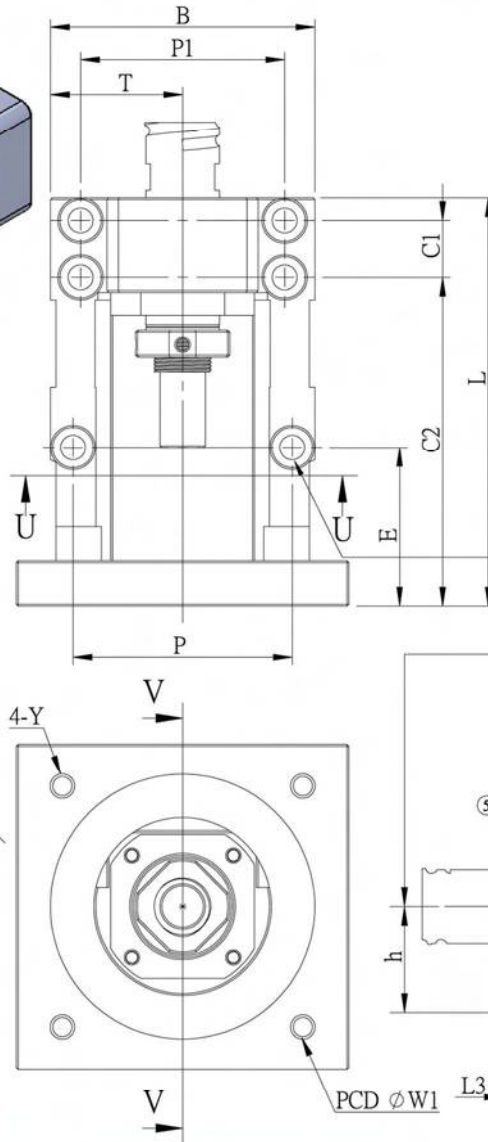
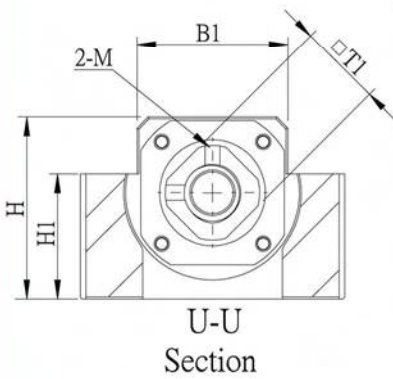


# Motor Bracket MBCB15

Cushion Stopper (option)

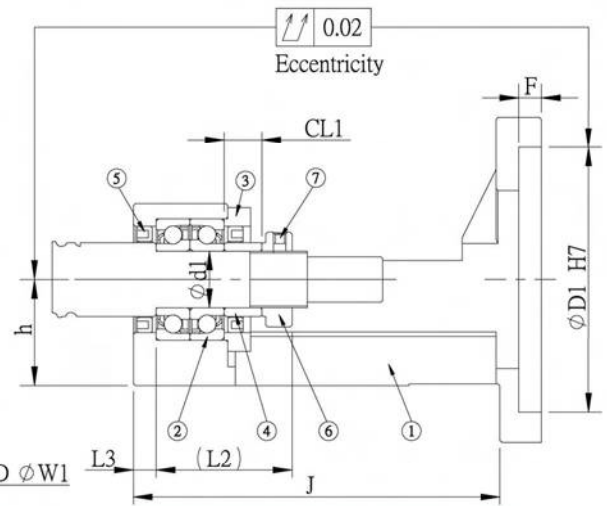
⑧

Part No.	Part name	Qty
1	Housing	1
2	7002A Bearing	1 set
3	Holding lid	1
4	Collar thin thickness 10	1
4	Collar thin thickness 6	2
5	Seal	2
6	Lock nut	1set
7	Cushion Stopper (option)	1



Surface treatment:  
Black Oxide / Electroless Nickel Plating

6-ØS drill Ø Q counter bore depth



Unit : mm

Model No	D1	W1	Y	L	$h_{\pm 0.02}$	B	P	T	Shaft diameter d1	CL1	L2	L3	H	H1	B1	P1
MBCB15-D	50	70	M5	98	28	70	58	35	15	10	36	6	48	33	40	54
MBCB15-DP			M4													
MBCB15-E	70	90	M6	108	28	70	58	35	15	10	36	6	48	33	40	54
MBCB15-EP			M5													

Model No	S	Q	E	C1	C2	F	J	M	T1	Weight (Kgs)	Support unit	Suggest Coupling
											Supported-side	
MBCB15-D	6.6	11	32	15	77	6	89	M4	22	0.98	BF15	SGS 34C SGS 40C
MBCB15-DP										0.99		
MBCB15-E			42		87		97			1.39		SGS 40C SGS 45C
MBCB15-EP										1.45		

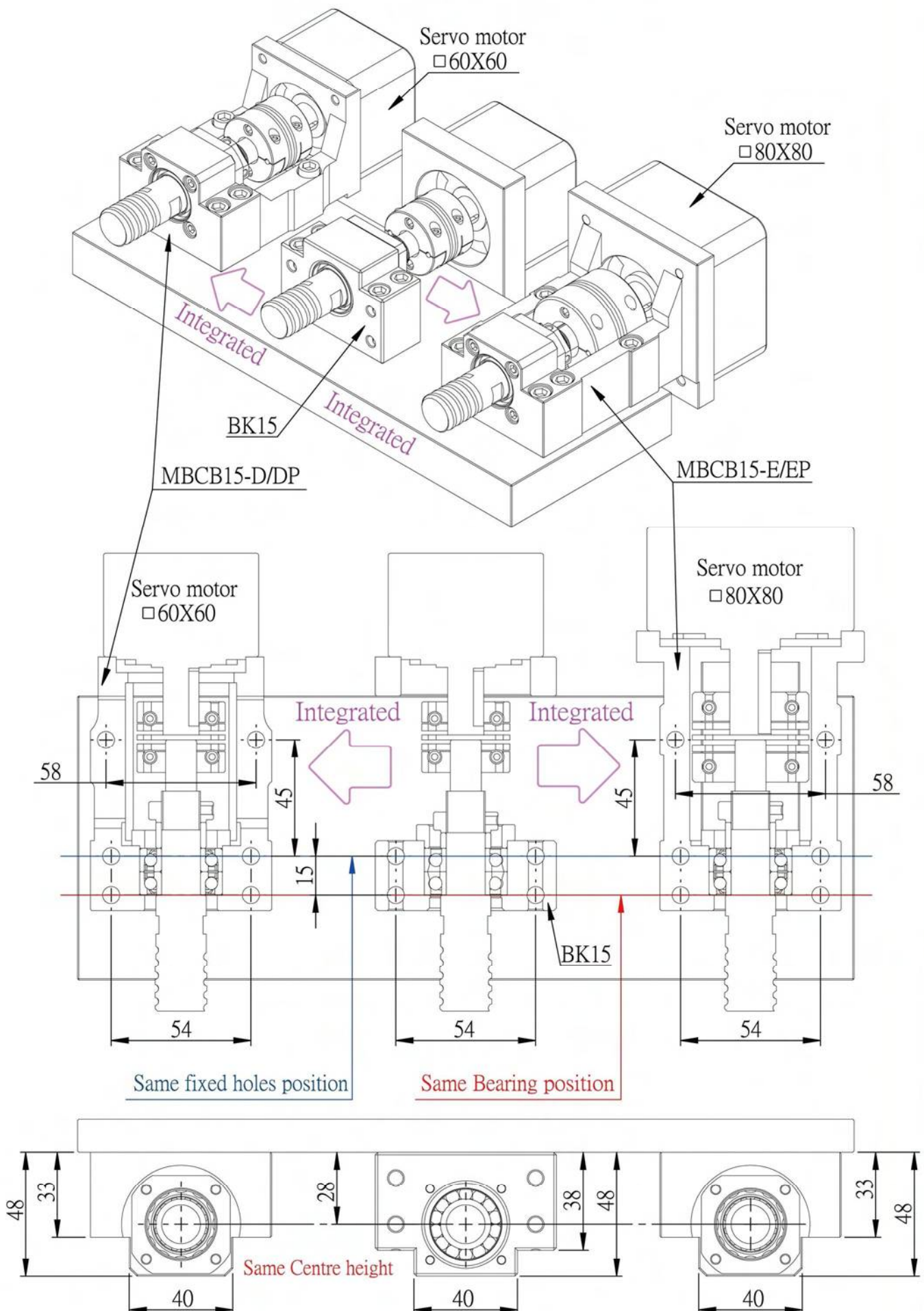
Note :

1.Bearings made preload , and axial clearance is 0 mm.

2.DF type, P5 grade preloaded duplex angular contact ball bearing suitable for ballscrew use.

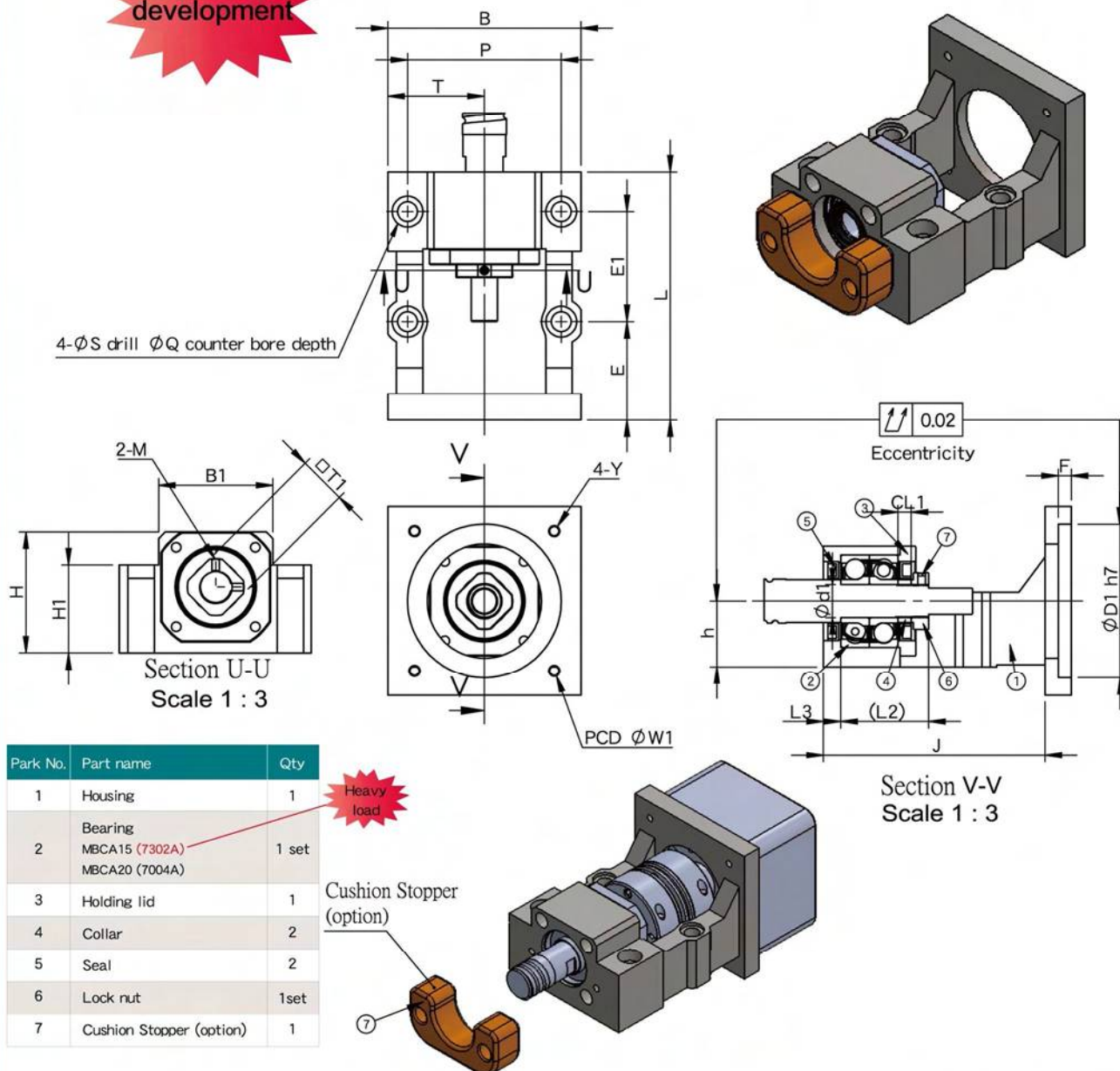


Without Change, directly update.





# Motor Bracket MBCA15 ~ 20



Park No.	Part name	Qty
1	Housing	1
2	Bearing MBCA15 (7302A) MBCA20 (7004A)	1 set
3	Holding lid	1
4	Collar	2
5	Seal	2
6	Lock nut	1set
7	Cushion Stopper (option)	1



Cushion Stopper (option)



Unit : mm

Model No	D1	W1	Y	L	$h_{\pm 0.02}$	B	P	T	Shaft diameter d1	CL1	L2	L3	H	H1	B1
MBCA15-E	70	90	M6	115	30	88	70	44	15	6	40	8	55	40	52
MBCA15-EP			M5	113					20	8	43				
MBCA20-E			M6	115					15	6	40				
MBCA20-EP			M5	113					20	8	43				

Model No	S	Q	E	E1	F	J	M	T1	Weight (Kgs)	Support unit	Suggest Coupling
MBCA15-E	9	14	47	50	8	101	M4	22	-	AK15 / AF15	SGB 50C
MBCA15-EP			45		6			22	-		
MBCA20-E			47		8			30	-	AK20 / AF20	SGS 50C
MBCA20-EP			45		6			30	-		

Note :

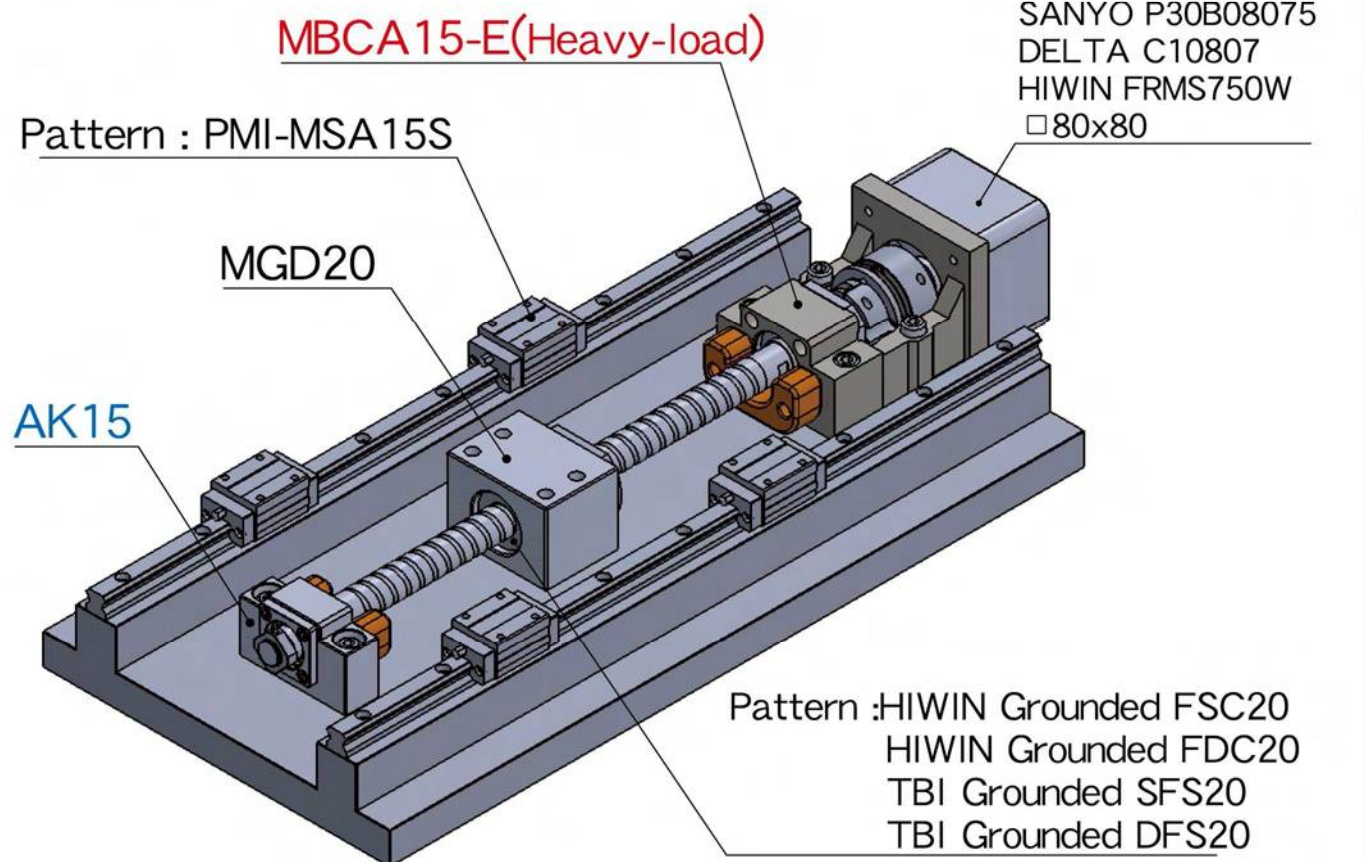
1.Bearings made preload , and axial clearance is 0 mm.

2.DF type, P5 grade preloaded duplex angular contact ball bearing suitable for ballscrew use.

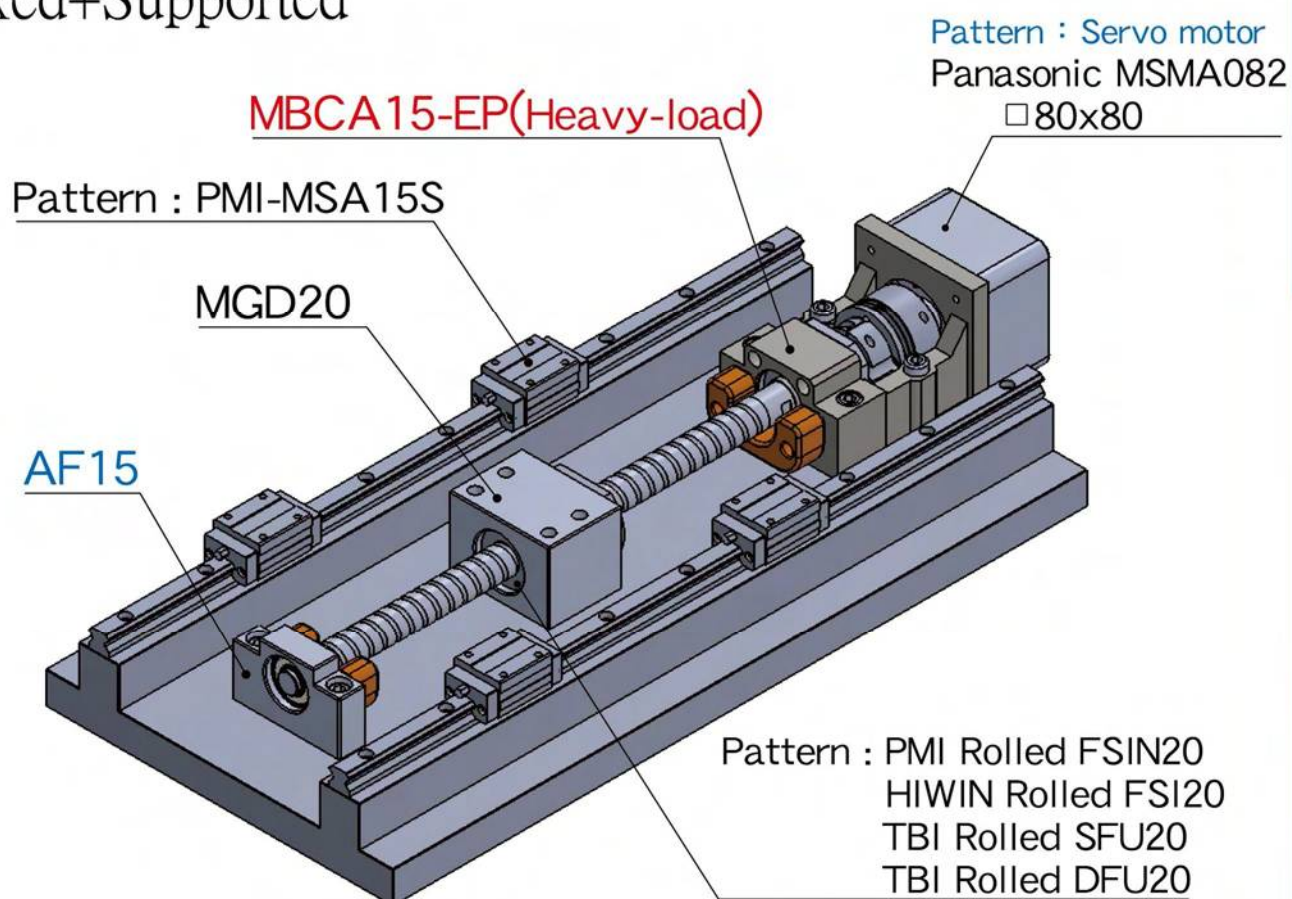


# Illustration for MBCA15

## Fixed+Fixed



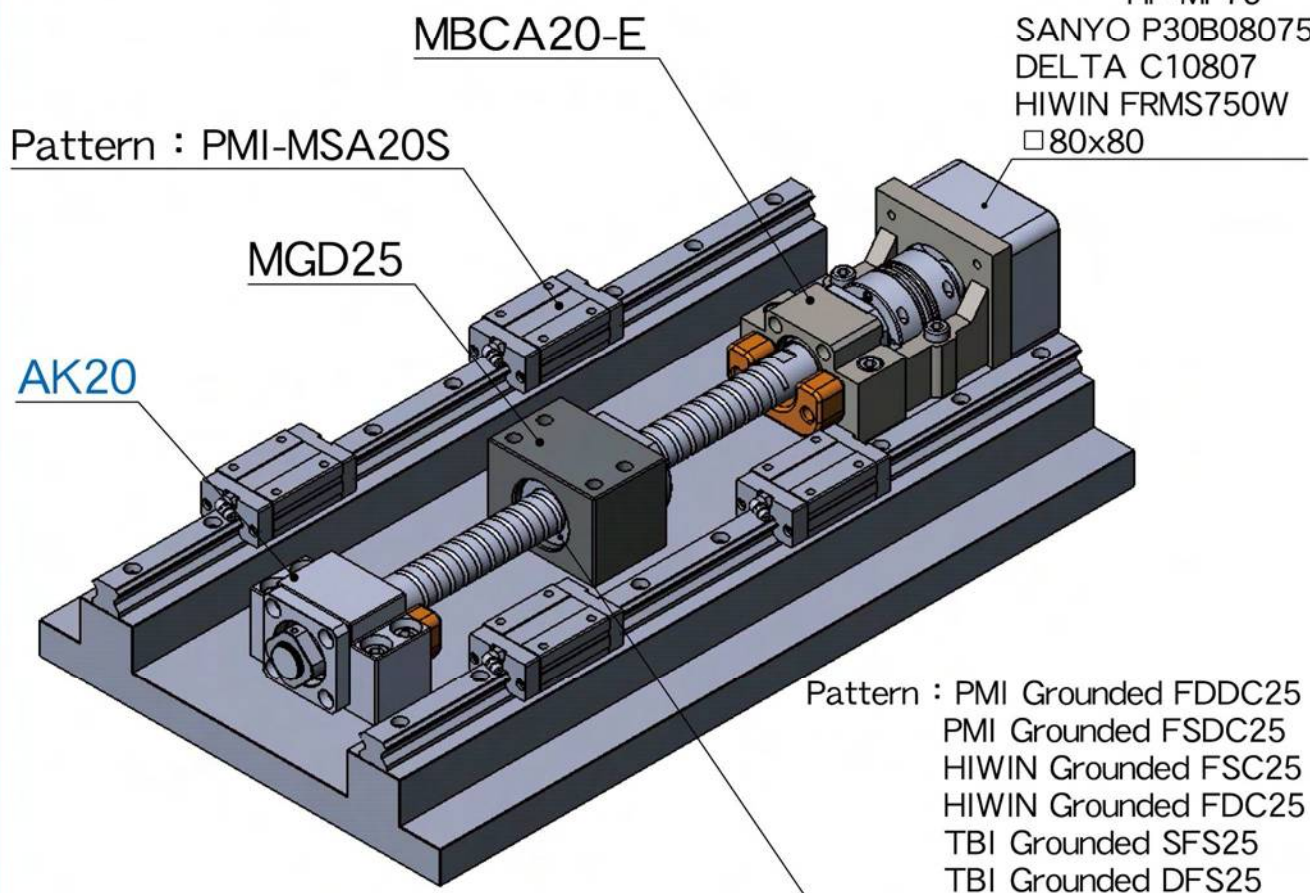
## Fixed+Supported



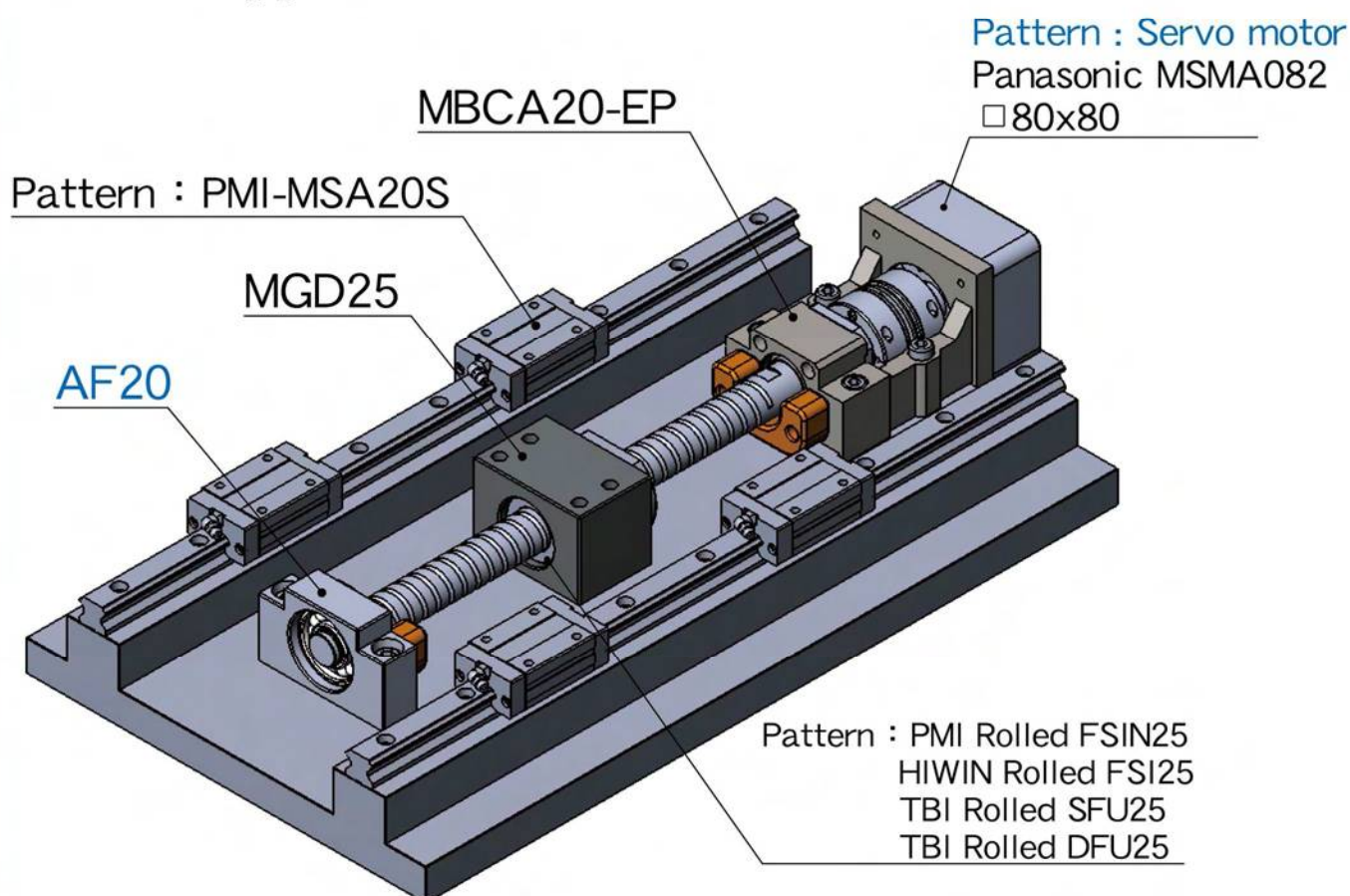


## Illustration for MBCA20

### Fixed+Fixed

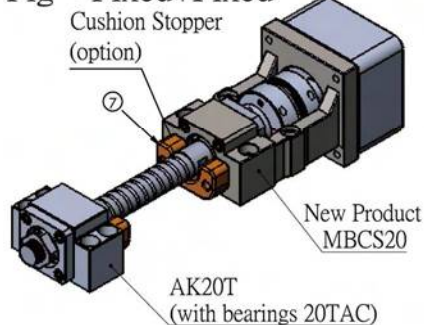


### Fixed+Supported

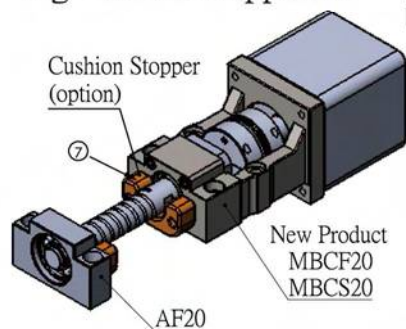


# Motor Bracket MBCE(S)15 / MBCF(S)20

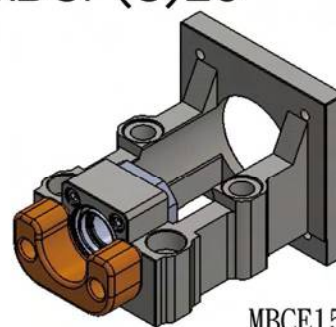
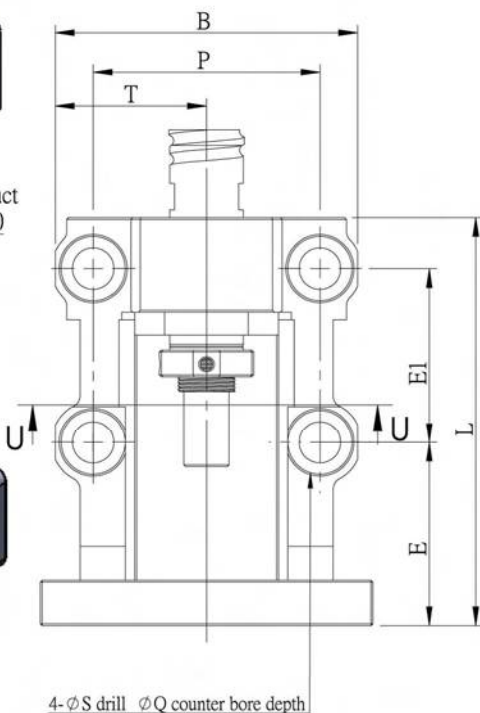
Fig→Fixed+Fixed



Fig→Fixed+Supported

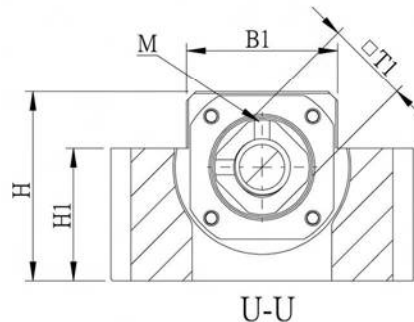


Park No.	Part name	Qty
1	Housing	1
2	Bearing	1 set
3	Holding lid	1
4	Collar	2
5	Seal	2
6	Lock nut	1set
7	Cushion Stopper (option)	1

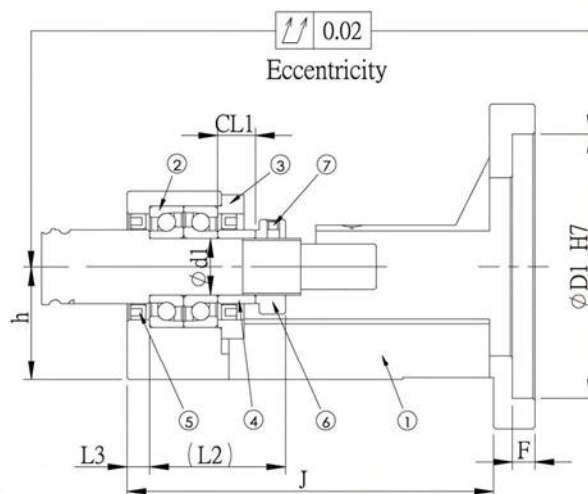
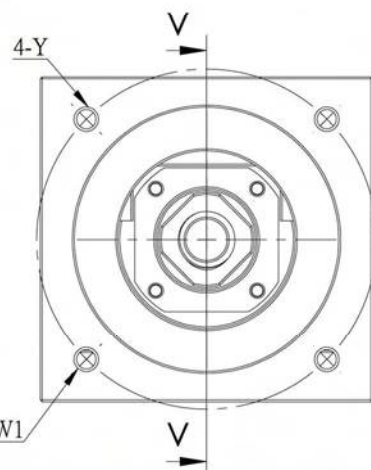


MBCE15-E

Surface treatment:  
Black Oxide / Electroless Nickel Plating



U-U



Unit : mm

Model No	D1	W1	Y	L	h ±0.02	B	P	T	Shaft diameter d1	CL1	L2	L3	H	H1	B1	S	Q	E	E1	F	J	M	T1	Weight (Kgs)	Support unit	Suggest Coupling
																									Supported-side	
MBCE15-D	50	70	M5	98	30	80	60	40	15	10	36	6	50	35	40	11	17	38.5	46	6	flat	M4	□22	1.09	EF 15 AF 15	SGS 34C SGS 40C
MBCE15-DP			M4																					1.07		
MBCE15-E	70	90	M6	108														48.5	97	M4	□22	1.52	SGS 40C SGS 45C			
MBCE15-EP			M5																			1.52				
MBCS15-X	80	100	M6	140	30	95	75	47.5	15	9	47	9	58	45	56	11	17	70	50	8	124	M4	□22	-	AF15	SGS 50C
MBCF20-X	80	100	M6	140	30	95	75	47.5	20	11	50	9	58	45	56	11	17	70	50	8	124	M4	□30	2.76	EF 20 AF 20	SGS 50C
MBCF20-Y	95	115	M8	141														71						2.71		SGS 50C SGS 57C
MBCF20-YP	110	130	M8	151														81						3.6		SGS 57C
MBCF20-S																										
MBCF20-G																										
MBCS20-X	80	100	M6	140	30	95	75	47.5	20	9	57	9	58	45	56	11	17	70	50	8	124	M6	φ40	-	AK20T AF20	SGS 50C
MBCS20-Y	95	115	M8	141														71						2.81		SGS 50C SGS 57C
MBCS20-YP	110	130	M8	151														81						3.69		SGS 57C
MBCS20-S																										
MBCS20-G																										

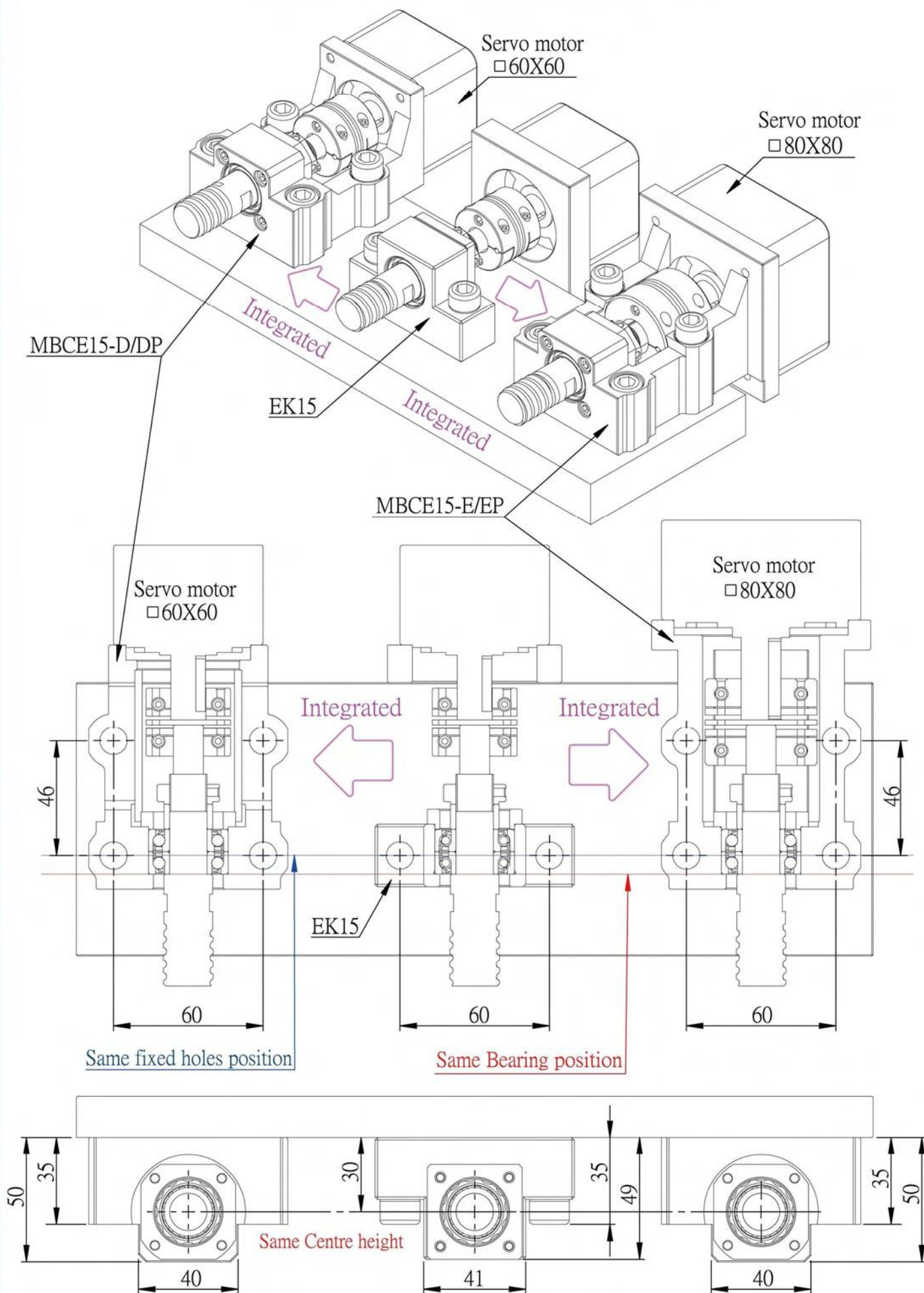
Note :

1.Bearings made preload , and axial clearance is 0 mm.

2.DF type, P5 grade preloaded duplex angular contact ball bearing suitable for ballscrew use.

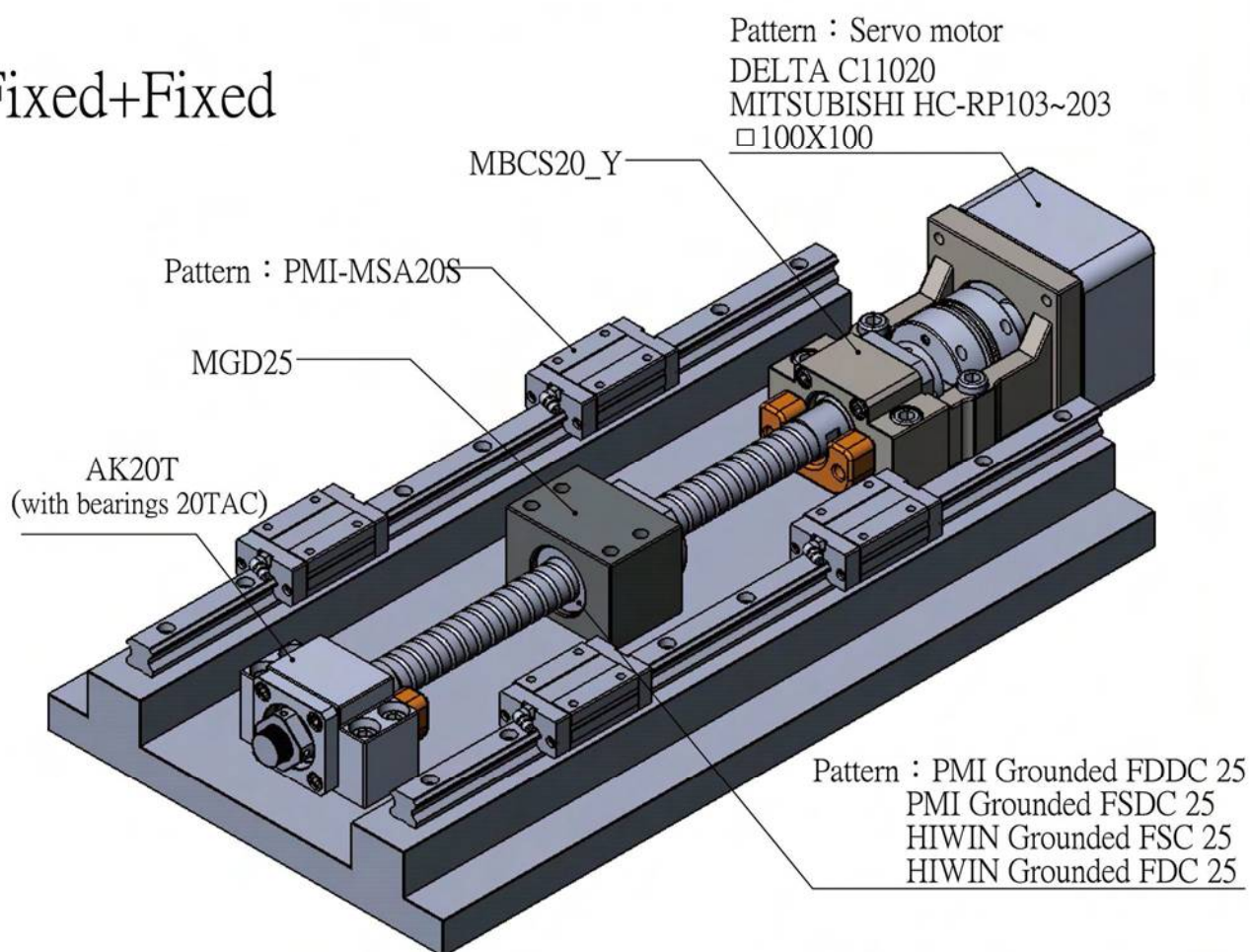


Without Change, directly update.

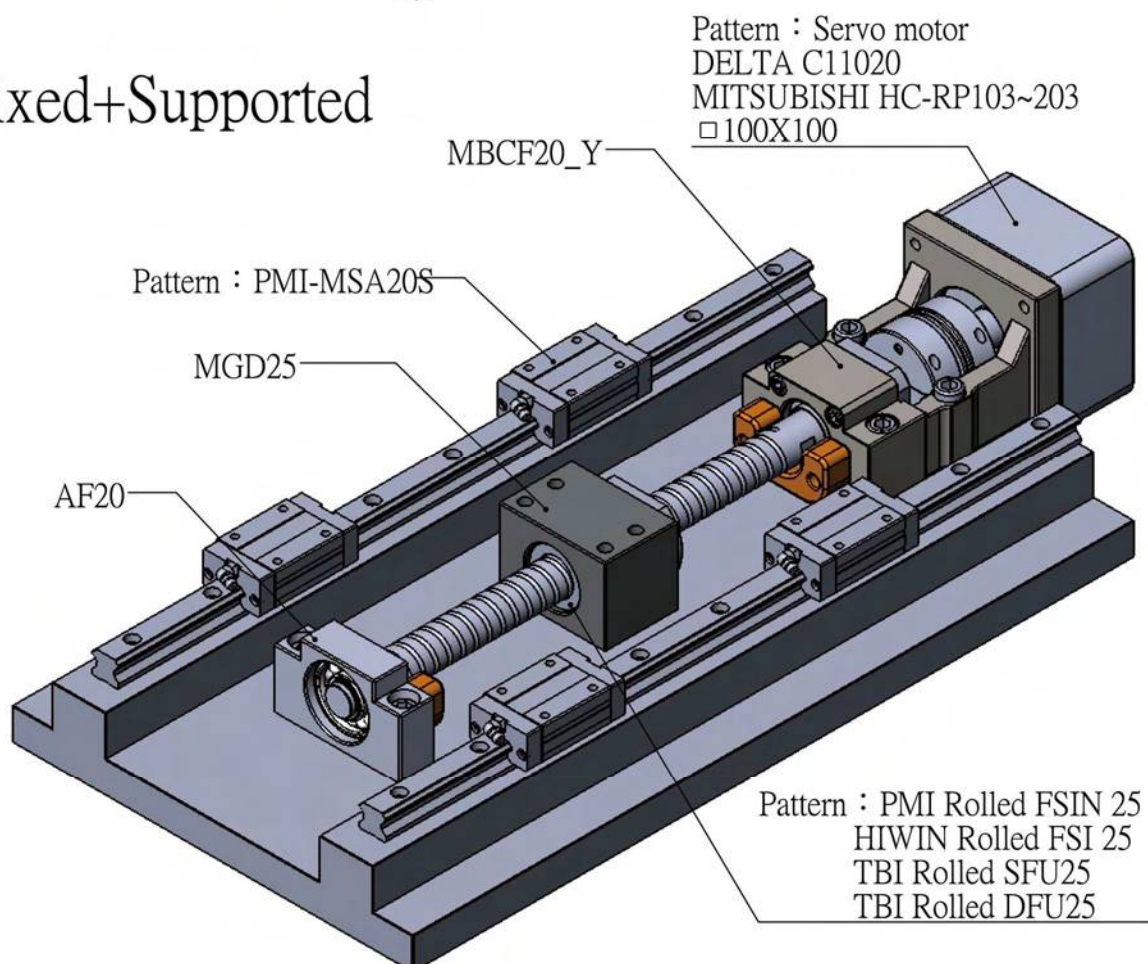


# Illustration for MBC\_20

## Fixed+Fixed

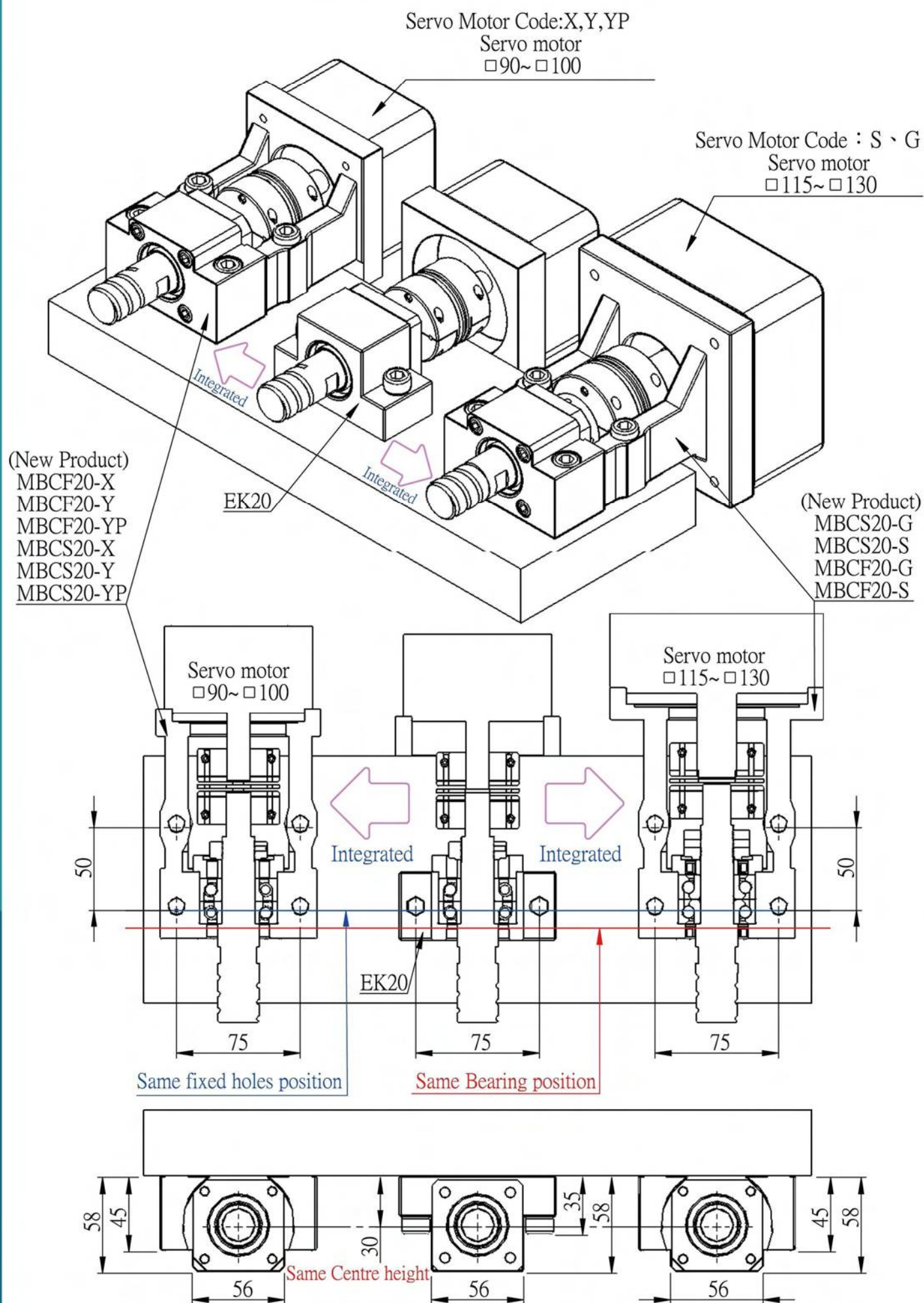


## Fixed+Supported





# Illustration for MBC\_20

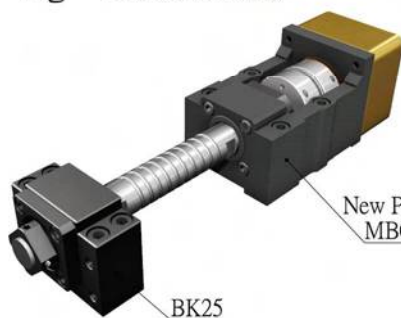




## Motor Bracket MBC25

New  
Product

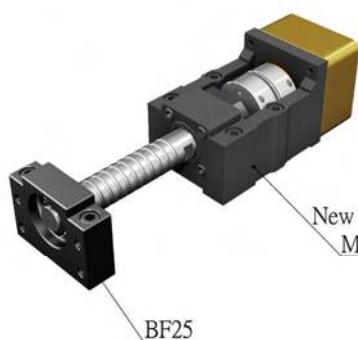
Fig→Fixed+Fixed



New Product  
MBC25

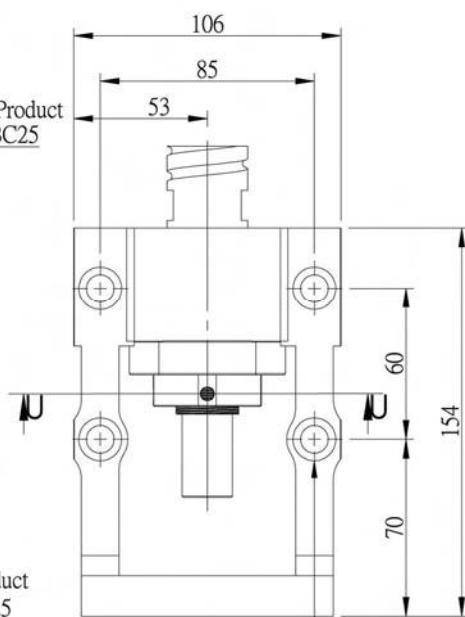
BK25

Fig→Fixed+Supported



New Product  
MBC25

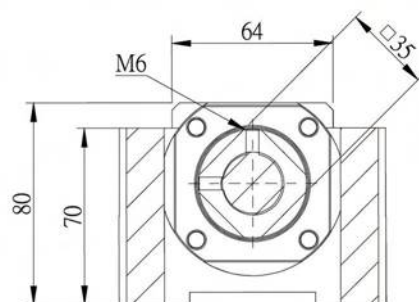
BF25



4- $\phi$ 11 drill  $\phi$ 17 counter bore depth

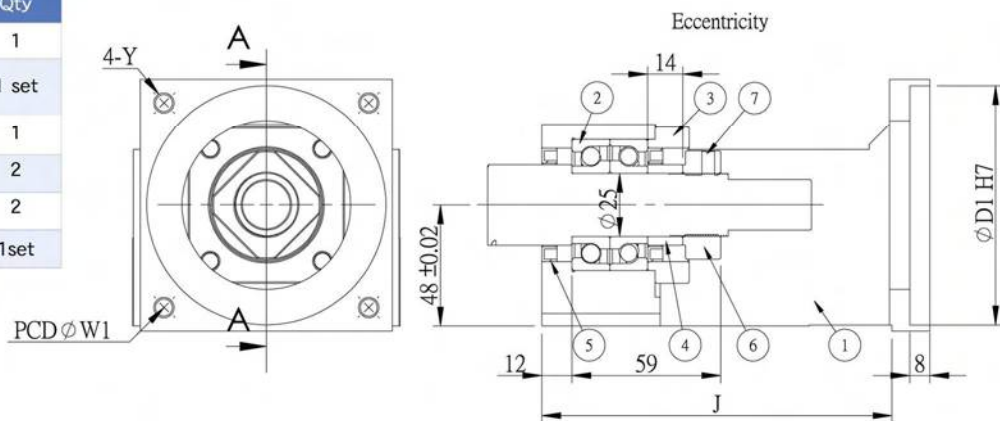


Surface treatment: Black Oxide



U-U

Park No.	Part name	Qty
1	Housing	1
2	Bearing Bearing 7205	1 set
3	Holding lid	1
4	Collar	2
5	Seal	2
6	Lock nut	1set



Unit : mm

Model No	D1	W1	Y	J	Weight (Kgs)	Support unit	Suggest Coupling
						Supported-side	
MBC25-X	80	100	M6	flat	-	BK25 BF25	SGS 57C SGS 65C
MBC25-Y	95	115	M8	139			
MBC25-YP			M6				

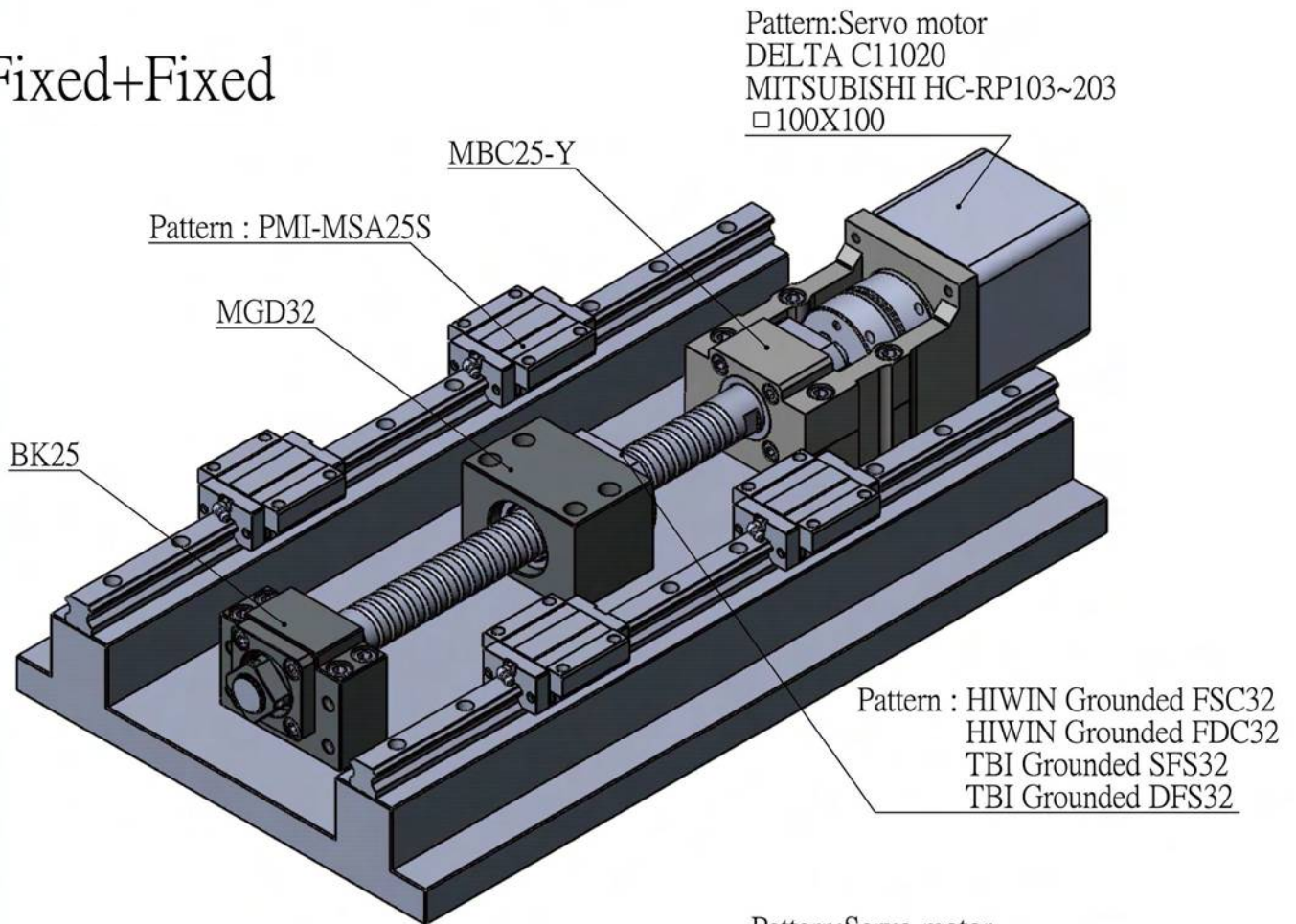
Note :

1. Bearings made preload, and axial clearance is 0 mm.

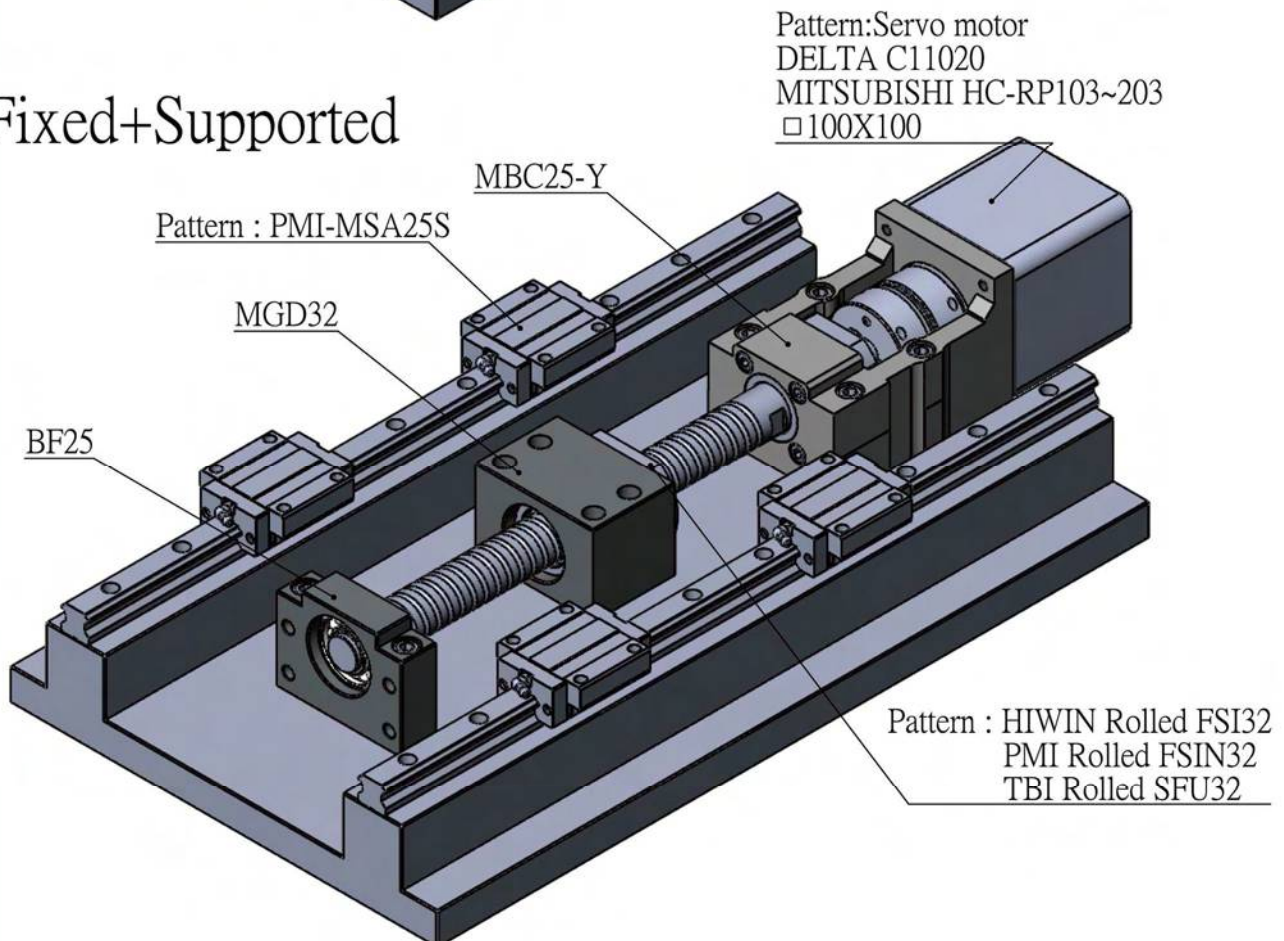
2.DF type, P5 grade preloaded duplex angular contact ball bearing suitable for ballscrew use.

## Illustration for MBC25

### Fixed+Fixed

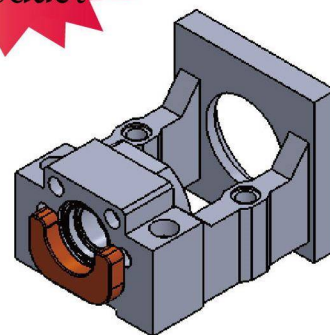
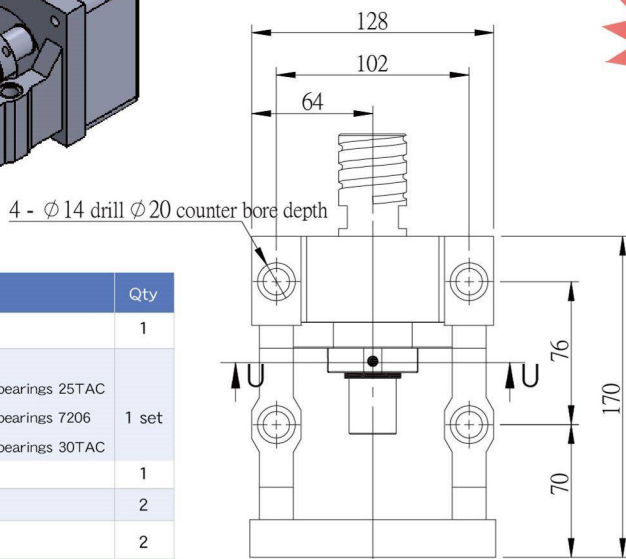
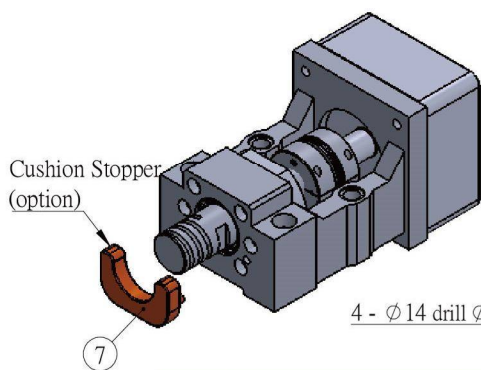


### Fixed+Supported

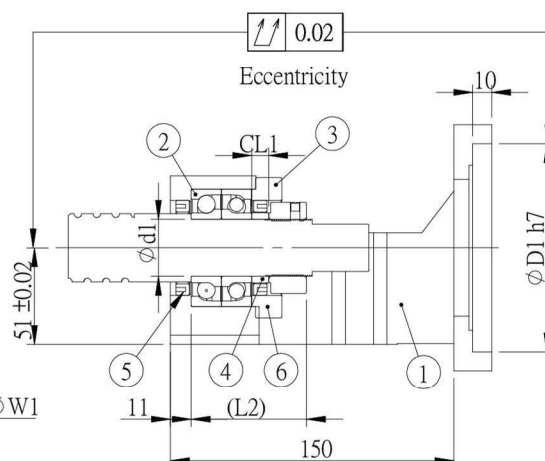
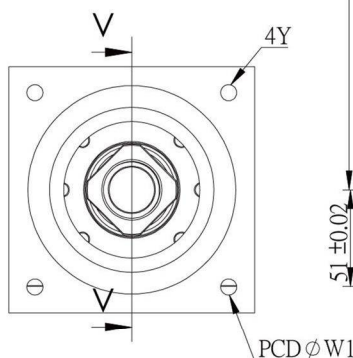
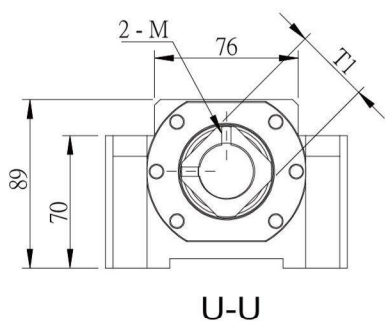




# Motor Bracket MBCS25 / MBC30



Park No.	Part name	Qty
1	Housing	1
2	Bearing	
	MBCS25 with bearings 25TAC	
	MBCF30 with bearings 7206	1 set
	MBCS30 with bearings 30TAC	
3	Holding lid	1
4	Collar	2
5	Seal	2
6	Lock nut	1set
7	Cushion Stopper (option)	1



Unit : mm

Unit : mm											
Model No	D1	W1	Y	Shaft diameter d1	CL 1	L2	M	T1	Weight (Kgs)	Support unit	Suggest Coupling
										Supported-side	
MBCS25-Y	95	115	M8	25	15	68	M6	ϕ 45	-	SBK25/SF25	SGL 65C
MBCS25-YP			M6						-		
MBCS25-S	110	130	M8						-		SGS 65C
MBCS25-G		145							-		
MBCF30-Y	95	115	M8	30	9	61	M4	□40	-	BK30/BF30	SGL 65C
MBCF30-YP			M6						-		
MBCF30-S	110	130	M8						-		SGS 65C
MBCF30-G		145							-		
MBCS30-Y	95	115	M8		15	65	M6	ϕ 50	-	SBK30 BK30/BF30	SGL 65C
MBCS30-YP			M6						-		
MBCS30-S	110	130	M8						-		SGS 65C
MBCS30-G		145							-		

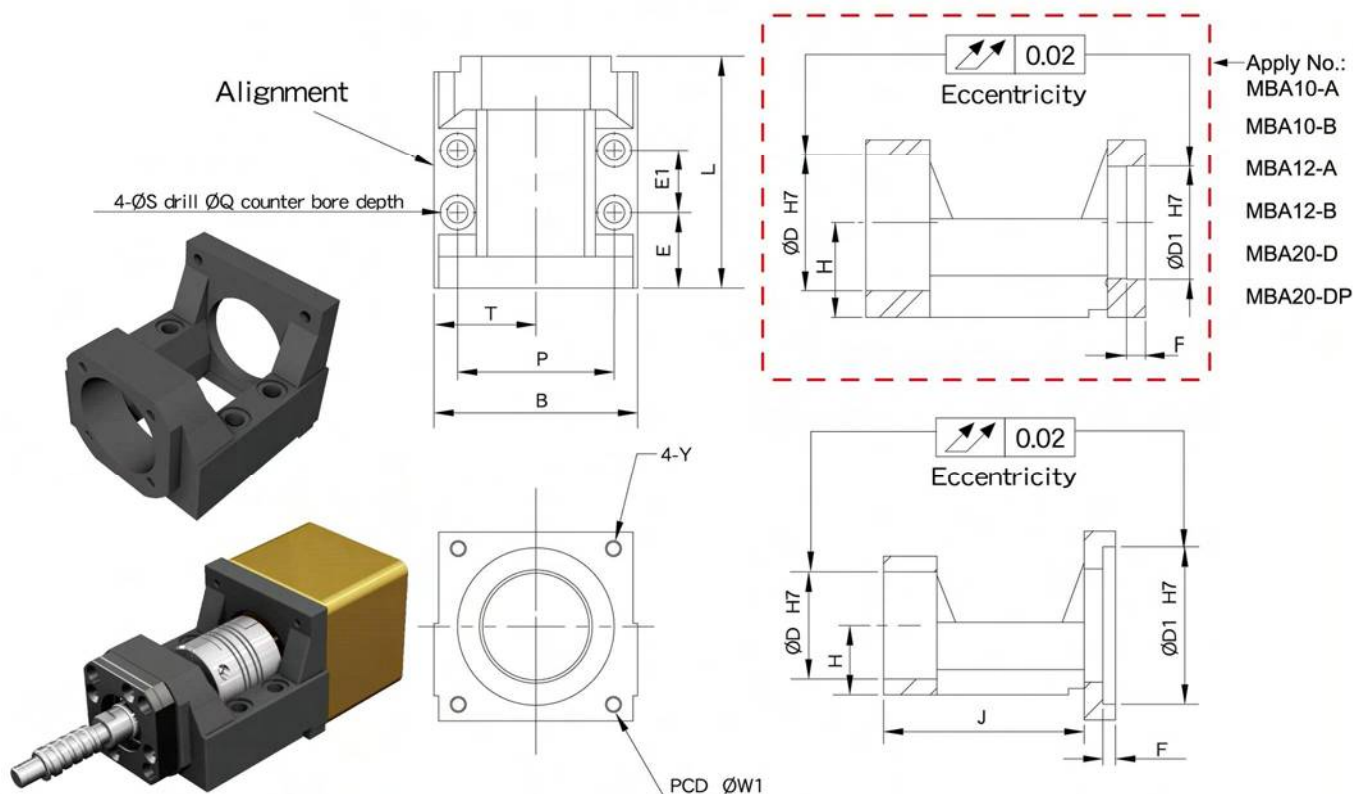
Note :

1. Bearings made preload , and axial clearance is 0 mm.

2. DF type, suitable for ballscrew use.



# Motor Bracket MBA (Narrow Type)



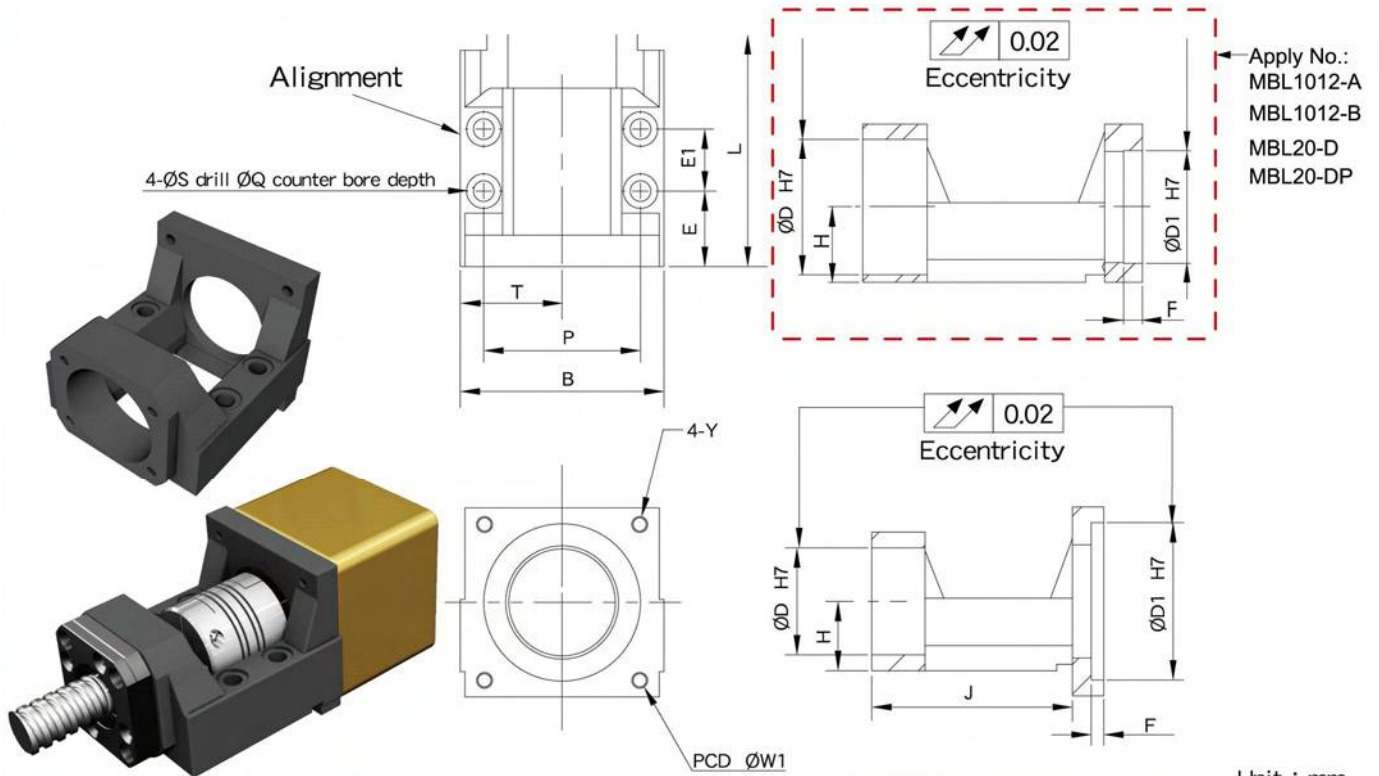
Unit : mm

Model No	Dimensions of Motor Bracket																Support unit		Suggest Coupling
	D1	W1	Y	D	L	H ±0.02	B	P	T	S	Q	E	E1	F	J	Weight (Kgs)	Fixed-side	Supported-side	
MBA6/8-A	30	45	M3	28	61	17	52	41	26	5.5	9.5	19	20	5	54	0.29	FKA06 FKA08	EF08	SGS 27C
MBA6/8-B		46	M4																
MBA10-A	30	45	M3	34	74	22	65	50	32.5	6.6	11	24	20	5	flat	0.62	FK10	BF10	SGL 27C
MBA10-B		46	M4																
MBA10-C	38.1	66.7	65												0.66	SGS 34C			
MBA10-D	50	70																	M5
MBA10-DP			M4																
MBA12-A	30	45	M3	36	74	25	65	50	32.5	6.6	11	24	20	5	flat	0.67	FK12	BF12	SGL 27C
MBA12-B		46	M4																
MBA12-C	38.1	66.7	65												0.7	SGS 34C			
MBA12-D	50	70																	M5
MBA12-DP			M4												0.68				
MBA15-C	38.1	66.7	M4	40	82	28	70	55	35	6.6	11	24	28	5	73	0.85	FK15	BF15	SGL 34C
MBA15-D	50	70	M5		84										74	0.86			SGS 34C
MBA15-DP			M4		92										81	1.3			
MBA15-F	73	98.4	M6		94										82	1.37			SGS 40C SGS 45C
MBA15-E	70	90			92										30	81			
MBA15-EP			M5												29	81			1.31
MBA20-D	50	70	M5	57	113	34	88	70	44	8.5	14	29	42	5	flat	1.56	FKA20	BF20	SGL 45C
MBA20-DP			M4													1.54			
MBA20-F	73	98.4	M6											6	102	1.59			
MBA20-E	70	90														M5			1.61
MBA20-EP			1.62											SGL 45C					

Note :

1.Can choose B angle bearings when use support unit with FKA20

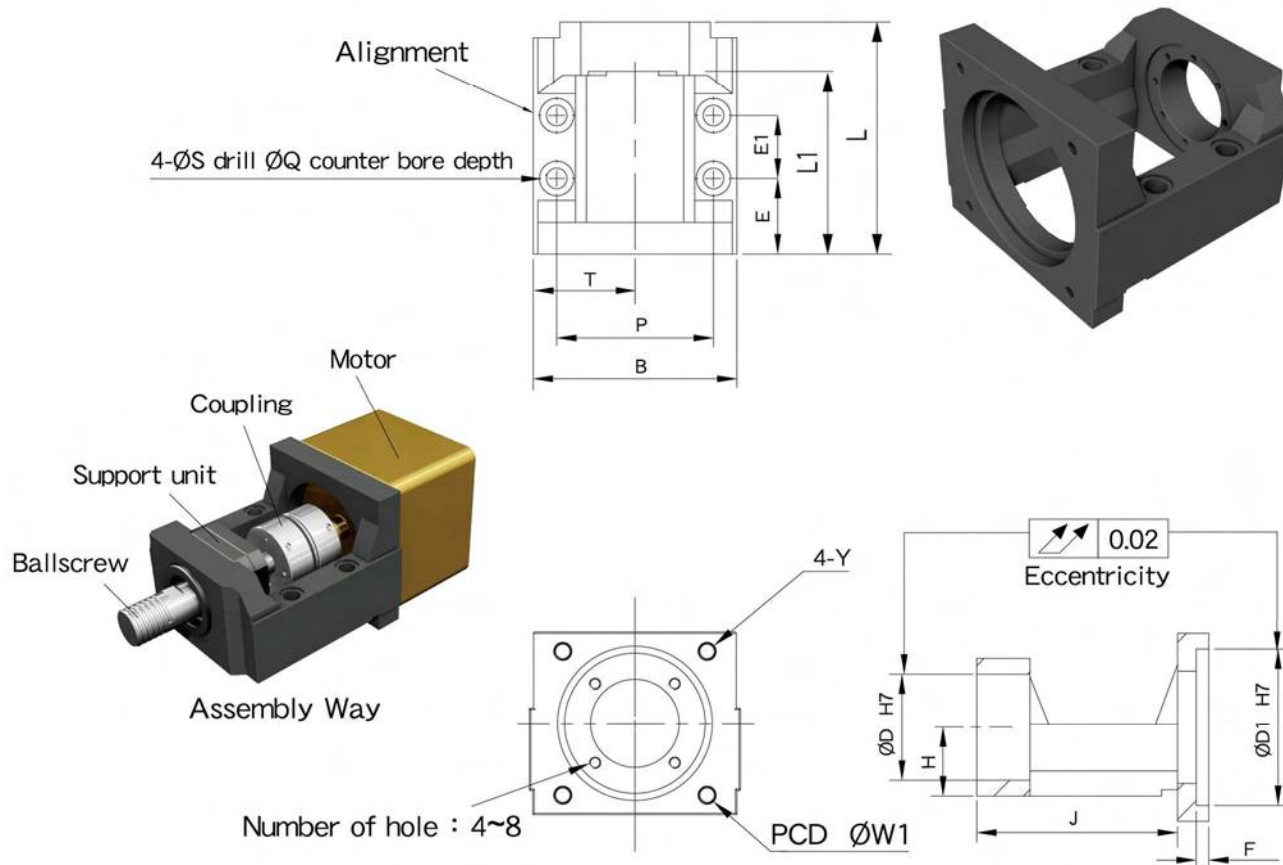
# Motor Bracket MBL (Low Narrow Type)



Model No	Dimensions of Motor Bracket																Support unit		Suggest Coupling		
	D1	W1	Y	D	L	H ±0.02	B	P	T	S	Q	E	E1	F	J	Weight (Kgs)	Fixed-side	Supported-side			
MBL6/8-A	30	45	M3	28	61	15.5	52	41	26	5.5	9.5	19	20	5	54	0.27	FKA06 FKA08	LF08 LFA12	SGS 27C		
MBL6/8-B		46	M4																		
MBL10/12-A	30	45	M3	36	74	20	65	50	32.5	6.6	11	24	20	5	flat	0.56	FKA10 FKA12	LF12 LFA15	SGL 27C		
MBL10/12-B		46	M4													0.53					
MBL10/12-C	38.1	66.7														0.61					
MBL10/12-D	50	70	M5												65	0.57					
MBL10/12-DP			M4																		
MBL15-C	38.1	66.7	M4	40	82	22	70	55	35	6.6	11	24	28	5	73	0.73	FKA15	LF15 LFA20	SGL 34C		
MBL15-D	50	70	M5		84							74			0.74	SGS 34C					
MBL15-DP			M4																		
MBL15-F	73	98.4	M6		92		88	70	44	8.5	14	29		6	81	1.15			SGS 40C		
MBL15-E	70	90			94							30			82	1.21					
MBL15-EP			M5		92							29			81	1.17					
MBL20-D	50	70	M5	57	113	30	88	70	44	8.5	14	29	42		5	flat	1.43	FKA20		AF20 EF20 LFA25	SGL 45C
MBL20-DP			M4														1.41				
MBL20-F	73	98.4	M6												6	102	1.44				SGS 45C
MBL20-E	70	90												1.47							
MBL20-EP			M5											1.48							

Note :

1.Can choose B angle bearings when use support unit with FKA20



Unit : mm

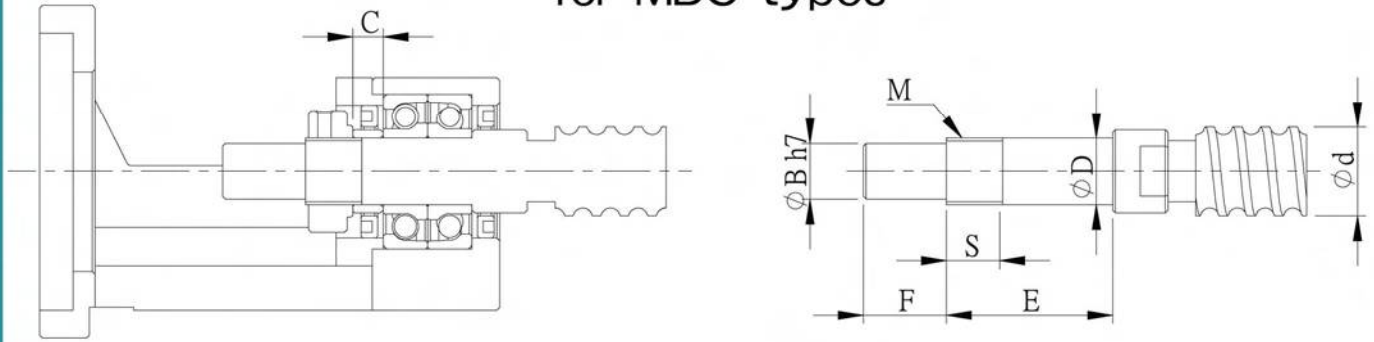
Model No	Dimensions of Motor Bracket																	Support unit		Suggest Coupling
	D1	W1	Y	D	L	L1	H ±0.02	B	P	T	S	Q	E	E1	F	J	Weight (Kgs)	Fixed-side	Supported-side	
MBB20L-G	110	145	M8	57	170	143	48	150	126	75	14	20	53	59	10	146	6.46	FK20B	BF20H	SGL 65C
MBB20-G				58														MBK15DF	BF15+20mm	
																		MBK17DF	BF17+9mm	
																		MBK20DF	BF20H	
MBB25L-S	110	130	M8	63	167	141	48	150	126	75	14	20	51	59	8	146	-	FK25	BF25	SGL 65C
MBB25L-G		145			170	143							53	10	6.23		SGL 65C			
MBB25L-G-M					55	70							150		5.9		SGS 65C			
MBB30-H	114.3	200	M12	85	230	189	51	200	170	100	18	26	75	75	-	191	14	WBK25DF WBK25DFD	SF25 SBK25	SAP-82C SAP-94C
																		WBK30DF WBK30DFD	BF30 SBK30	

Note :

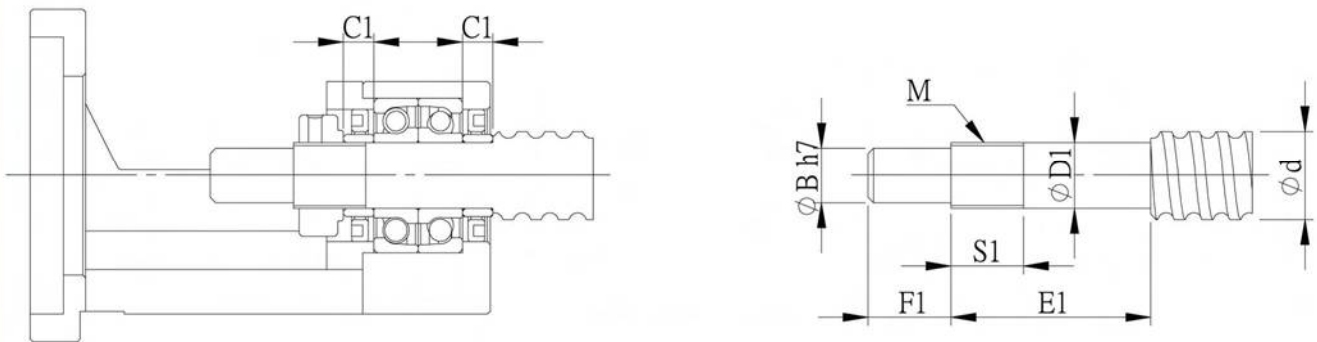
1.Can choose B angle bearings when use support unit with FK20/FK25



## Recommended shaft end shape (Fixed-side) for MBC types



Ground Ballscrew



Rolled Ballscrew

Unit : mm

Support unit model No.	Ballscrew shaft OD	Shaft support portion OD							Metric screw thread			Length of Sleeve	
MBC型	d	D	D1	B	E	E1	F	F1	M	S	S1	C	C1
MBCB12	14/15/16	12 <sup>-0.006 -0.017</sup>		10	30	36	15		M12X1	10	12	5.5	5.5
MBCE12													
MBCB15	18/20	15 <sup>-0.006 -0.017</sup>		12	40	40	20		M15X1	15	12	10	6
MBCE15						48							
MBCS15							10	10					
MBCA15						6							
MBCF20	25/28	20 <sup>-0.006 -0.017</sup>		17	53	64	27		M20X1	16		11	
MBCS20					60	69	25			23		9	
MBCA20					43	51	22			16		8	
MBC25	30/32/36	25 <sup>-0.006 -0.017</sup>		20	62	76	33	30	M25X1.5	20		14	

Motor Bracket MB and Corresponding motor reference table

Motor Bracket	Servo Motor Brand Specification		
	Manufacturer	Model No	Flange Width
MB*-A	Panasonic	MSMA3A MSMA5A MSMA01	38
	HIWIN	FRLS50W/100W	
MB*-B	Yaskawa electric	SGMAH-A3 SGMAH-A5	40
	Mitsubishi electric	HF-KP053 / 13 HF-MP053 /13	
	OMRON	R88M-W03030 R88M-W05030 R88M-W10030	
	SANYO	P30B04003 P30B04005 P30B04010	
MB*-C	Yaskawa electric	02SGMAH-21 04SGMAH-21	60
MB*-D	Yaskawa electric	SGMAH-02 / 04A SGMAH-03D	60
	Mitsubishi electric	HF-KP23 / 43 HF-MP23 /43	
	OMRON	R88M-W20030 R88M-W40030	
	SANYO	P30B06020 P30B06040	
	DELTA	C10602 C10604	
	HIWIN	FRLS200W FRLS400W	
MB*-DP	Panasonic	MSMA021 MSMA041	60
MB*-E	Yaskawa electric	SGMAH-08A	80
	Mitsubishi electric	HF-KP73 HF-MP73	
	SANYO	P30B08075	
	DELTA	C10807	
	HIWIN	FRMS750W	
MB*-EP	Panasonic	MSMA082	80
MB*-Y	DELTA	C11010 C11020	100
	Mitsubishi electric	HC-RP103 /153 HC-RP203	

Motor Bracket	Servo Motor Brand Specification		
	Manufacturer	Model No	Flange Width
MB*-F	Yaskawa electric	SGMAH-N21	85
MB*-G	Yaskawa electric	SGMGH-05 SGMGH-09 SGMGH-13	120~130
	Mitsubishi electric	HF-SP51~81 HF-SP52~152 HF-SP524~1524 HC-LP52~152	
	DELTA	E11305・G11303 E11310・G11306 E11315・G11309 E11320	
	Panasonic	MDMA102 MDMA152 MDMA202 MDMA252 MDMA302	130
	FANUC	B8・B12	
HIWIN	FRMM1KW		
MB*-H	Yaskawa electric	SGMGH-20 SGMGH-30 SGMGH-44	180
	DELTA	E11820 E11830 F11830	
	Mitsubishi electric	HF-SP121~421 HF-SP202~702 HF-SP2024 HF-SP3524 HF-SP5024 HF-SP7024 HC-LP202 HC-LP302	176
	Panasonic	MDMA452 MDMA502	
MB*-S	SIEMENS	1FK7060 1FT6062	126 116
MB*-X	FANUC	$\beta$ 2/4000is $\beta$ 4/4000is	90
	SIEMENS	1FT6044 1FK7042-5	96
MB*-YP	Yaskawa electric	SGMSH-10 SGMSH-15 SGMSH-20	100

Note :

- 1.For others brand servo motor , please check off dimensions W1 、D1 、Y It can be applied as match , Please be attention for length of shaft .
- 2.Specifications are subject to change without prior notice if required to improve performance .