

Linear Guideways

CG series

3.3.9.2 CGW

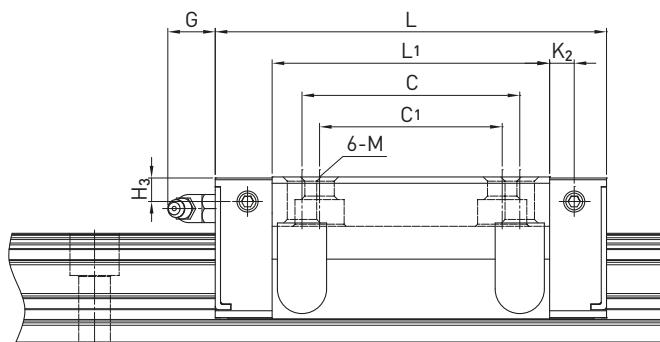
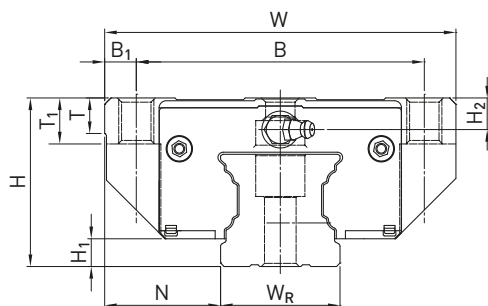


Table 3.49 Dimensions of the block

Series/size	Installation dimensions [mm]			Dimensions of the block [mm]															Load ratings [N]		Weight [kg]
	H	H ₁	N	W	B	B ₁	C	C ₁	L ₁	L	K ₂	G	M	T	T ₁	H ₂	H ₃	C _{dyn}	C ₀		
CGW15CC	24	4.1	16.0	47	38	4.5	30	26	39.6	58.2	4.25	6.0	M5	6.0	6.5	3.8	3.8	14.700	19.520	0.14	
CGW20CC	30	4.6	21.5	63	53	5.0	40	35	52.5	74.9	5.50	6.0	M6	6.5	7.7	3.7	3.5	23.700	30.510	0.36	
CGW20HC									68.5	90.9								28.600	39.900	0.47	
CGW25CC	36	6.1	23.5	70	57	6.5	45	40	61.0	84.0	5.00	12.0	M8	7.0	9.3	6.0	5.5	34.960	43.940	0.53	
CGW25HC									78.4	101.4								40.500	54.080	0.68	
CGW30CC	42	7.0	31.0	90	72	9.0	52	44	69.0	97.4	8.70	12.0	M10	10.5	12.0	6.7	7.0	46.000	55.190	0.90	
CGW30HC									91.5	119.9								58.590	78.180	1.19	
CGW35CC	48	7.6	33.0	100	82	9.0	62	52	79.0	111.4	7.00	12.0	M10	10.1	13.1	9.0	7.0	61.170	79.300	1.37	
CGW35HC									103.4	135.8								77.900	112.340	1.79	
CGW45CC	60	9.7	37.5	120	100	10.0	80	60	97.2	137.6	8.70	12.9	M12	15.1	15.0	8.5	8.1	98.430	112.660	2.45	
CGW45HC									133.6	174.0								125.580	159.600	3.00	

For dimensions of rail, see [chapter 3.3.10](#) for standard and optional lubrication adapter, see [chapter 4.1](#)

