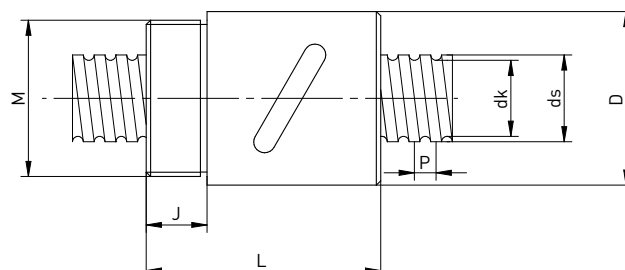


Ball screws

Rolled

2.5 Simple cylindrical nut with thread RSB



Nut type	Size	ds	P	D	M	L	J	dk	Dyn. capacity C_{dyn} [N]	Stat. capacity C_0 [N]	Max. axial play [mm]	Nut weight [kg]	Shaft weight [kg/m]	Accuracy class T5
R16-05B1-RSB	16x5	16	5	32.5	M26x1.5	42	12	12.9	6790	12260	0.04	0.26	1.26	●
R20-05C1-RSB	20x5	20	5	40.0	M36x1.5	54	14	16.9	10010	21490	0.04	0.34	2.07	●
R25-05B2-RSB	25x5	25	5	46.0	M42x1.5	69	19	22.3	15340	39750	0.04	0.54	3.42	●
R32-05B2-RSB	32x5	32	5	55.0	M50x2.0	69	19	29.1	17020	50980	0.04	0.73	6.31	●

Dimensions in [mm]

- Standard accuracy class T7
- Accuracy class T5 on request