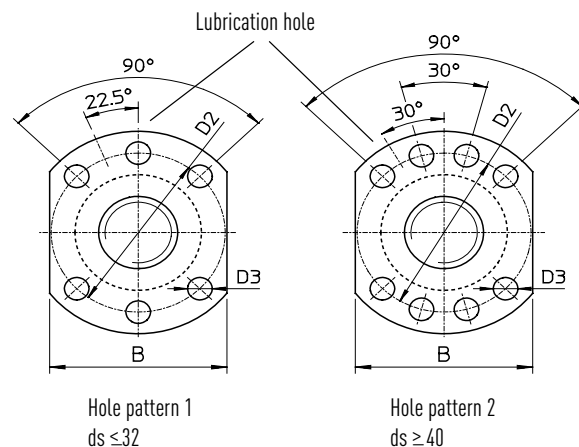
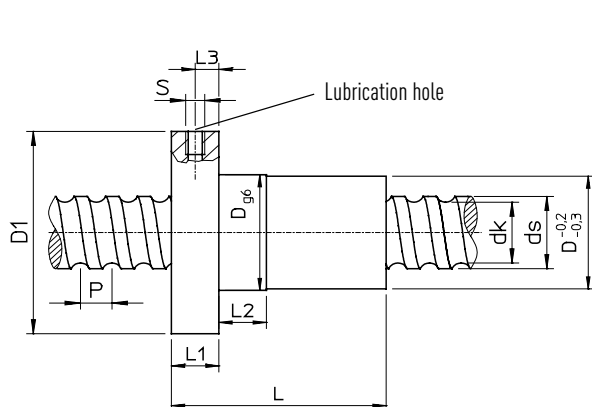


# Ball screws Peeled

## 3.4 Single flanged nut DEB



Nut type	ds	P	D g6	D1	D2	D3	Hole pattern	L	L1	L2	L3	S	B	dk	C <sub>dyn</sub> [N]	C <sub>0</sub> [N]	Nut weight [kg]
DEB1605-R-3EF	16	5	28	48	38	5.5	1	40	10	10	5.0	M6	40	13.5	9600	12700	0.17
DEB2005-R-4EF	20	5	36	58	47	6.6	1	52	10	10	5.0	M6	44	17.5	13900	21800	0.29
DEB2505-R-4EF	25	5	40	62	51	6.6	1	52	10	10	5.0	M6	48	22.5	15600	27900	0.31
DEB2510-R-3EF	25	10	40	62	51	6.6	1	65	10	16	5.0	M6	48	21.0	24100	36200	0.35
DEB3205-R-5EF	32	5	50	80	65	9.0	1	60	12	10	6.0	M6	62	29.5	20700	43900	0.66
DEB3210-R-4EF	32	10	50	80	65	9.0	1	85	14	16	7.0	M6	62	27.8	40900	63200	0.82
DEB3220-R-2EB	32	20	50	80	65	9.0	1	80	14	16	7.0	M6	62	27.8	20300	26800	0.66
DEB4005-R-5EF	40	5	63	93	78	9.0	2	69	14	10	7.0	M8x1	70	37.5	22500	54600	1.12
DEB4010-R-4EF	40	10	63	93	78	9.0	2	88	14	16	7.0	M8x1	70	35.8	46800	82600	1.12
DEB4020-R-2EB	40	20	63	93	78	9.0	2	88	14	16	7.0	M8x1	70	35.8	23800	36400	1.13
DEB5005-R-5EF	50	5	75	110	93	11.0	2	69	16	10	8.0	M8x1	85	47.5	24900	69800	1.44
DEB5010-R-4EF	50	10	75	110	93	11.0	2	98	16	16	8.0	M8x1	85	45.8	52800	106800	1.61
DEB5020-R-3EB	50	20	75	110	93	11.0	2	114	16	16	8.0	M8x1	85	45.8	40000	76200	1.91
DEB6310-R-6EF	63	10	90	125	108	11.0	2	120	18	16	9.0	M8x1	95	58.8	84700	210800	2.98
DEB6320-R-4EP	63	20	95	135	115	13.5	2	150	20	25	10.0	M8x1	100	55.4	105000	250000	3.83
DEB6320-R-5EP	63	20	95	135	115	13.5	2	175	20	25	10.0	M8x1	100	55.4	125000	300000	4.30
DEBH6320-R-6GP	60	20	125	165	145	13.5	2	170	25	25	12.0	M8x1	130	50.2	230000	600000	9.40
DEB8010-R-6EF	80	10	105	145	125	13.5	2	120	20	16	10.0	M8x1	110	75.8	93400	269200	3.13
DEB8020-R-4EP	80	20	125	165	145	13.5	2	160	25	25	12.0	M8x1	130	72.4	135000	322000	7.95
DEB8020-R-5EP	80	20	125	165	145	13.5	2	175	25	25	12.0	M8x1	130	72.4	161500	398000	9.25
DEBH8020-R-6GP	78	20	135	175	155	13.5	2	170	25	25	12.5	M8x1	140	68.2	280000	720000	13.00
DEBH8020-R-7GP	78	20	135	175	155	13.5	2	190	25	25	12.5	M8x1	140	68.2	320000	820000	13.60

Dimensions in [mm]

- Nuts for peeled ball screws
- Dimensions acc. DIN 69051 part 5
- Single flanged nut
- Housings for nuts available
- Accuracy class P5 and P7