

Ball screws

Bearing housings

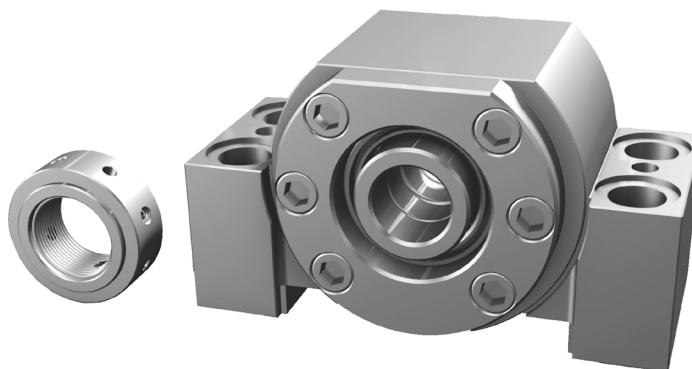
5.10 SBK bearing housings for high load

Thanks to their robust steel bearing housing, the bearing units of the SBK series are especially suited to use in heavy-duty ballscrews. Depending on the axial loads present, the SBK bearing units are available with the DF and DFD bearing arrangements.

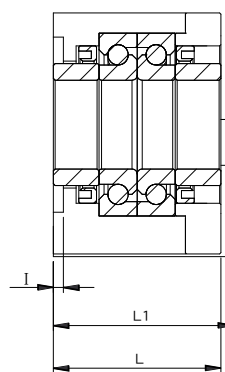
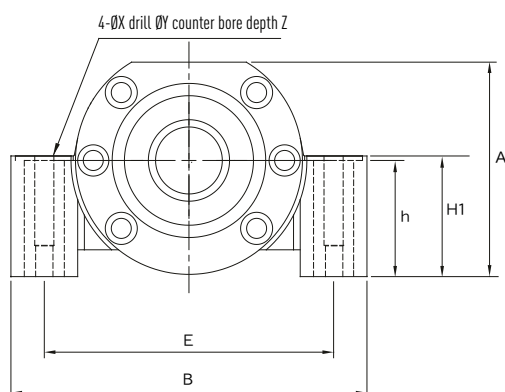
The end machining processes suited to the SBK fixed bearing are types WS2 and WS3.

High load bearing set SBK includes:

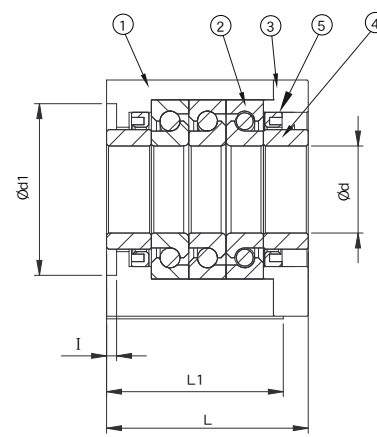
- Steel bearing housing
- Angular contact ball bearing (2 or 3 pcs)
- Spacer (2 pcs)
- Lock nut



Bearing arrangements



DF Type



DFD Type

Note:

1. To ensure high accuracy, parts 1 – 5 may not be disassembled..

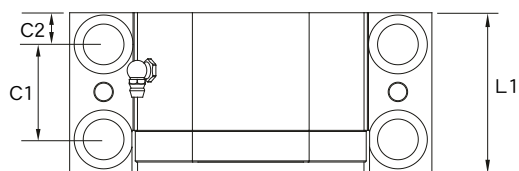
(1) Steel housing, (2) Bearing, (3) Bearing cover, (4) Spacer, (5) Seal, (6) Lock nut

Type	Ball screw size	d	A	$h \pm 0.02$	H1	L	L1	L3	B	d1	E	C2	C1	X	Y	Z	I	V	P	Q	H
SBK-25-DF	32	25	89	51	53	66	71	18	160	57	130	15.5	40	18	26	2	4	70	M6	10	M6
SBK-25-DFD	32	25	89	51	53	81	71	18	160	57	130	15.5	40	18	26	2	4	70	M6	10	M6
SBK-30-DF	40	30	89	51	53	66	71	18	160	57	130	15.5	40	18	26	2	4	70	M6	10	M6
SBK-30-DFD	40	30	89	51	53	81	71	18	160	57	130	15.5	40	18	26	2	4	70	M6	10	M6
SBK-35-DF	40	35	96	52	54	66	71	18	160	69	130	15.5	40	18	26	2	4	80	M6	10	M6
SBK-35-DFD	40	35	96	52	54	81	71	18	160	69	130	15.5	40	18	26	2	4	80	M6	10	M6
SBK-40-DF	50	40	96	52	54	66	71	18	160	69	130	15.5	40	18	26	2	4	80	M6	10	M6
SBK-40-DFD	50	40	96	52	54	81	71	18	160	69	130	15.5	40	18	26	2	4	80	M6	10	M6

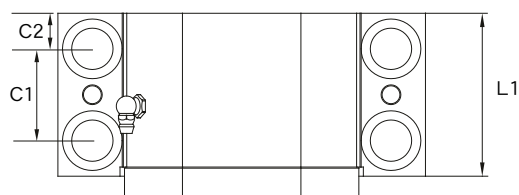
Dimensions in [mm]

Ball screws

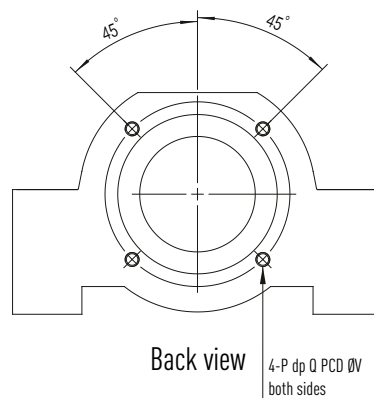
Bearing housings



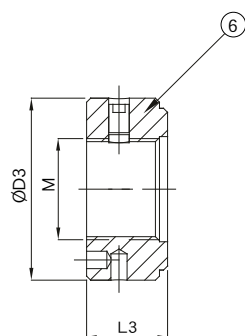
DF Type



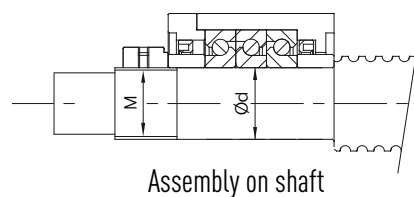
DFD Type



Back view



Lock nut



Assembly on shaft

Type	Dynamic capacity [kN]	Max. axial force [kN]	Preload [kN]	Axial rigidity [N/μm]	Starting torque [Nm]	Lock nut			Weight [kg]
						M	D3	L3	
SBK-25-DF	29.1	41.5	3.2	1000	0.29	M25x1.5	45	20	4.46
SBK-25-DFD	47.0	83.0	4.4	1500	0.40	M25x1.5	45	20	5.25
SBK-30-DF	29.8	44.0	3.4	1050	0.30	M30x1.5	50	20	4.35
SBK-30-DFD	48.5	88.0	4.6	1550	0.40	M30x1.5	50	20	5.09
SBK-35-DF	31.5	51.0	3.9	1200	0.35	M35x1.5	55	22	4.57
SBK-35-DFD	51.5	102.0	5.3	1750	0.46	M35x1.5	55	22	5.30
SBK-40-DF	32.5	53.0	4.0	1250	0.37	M40x1.5	60	22	4.60
SBK-40-DFD	52.5	106.0	5.4	1850	0.47	M40x1.5	60	22	5.15

Dimensions in [mm]