

Ball screws

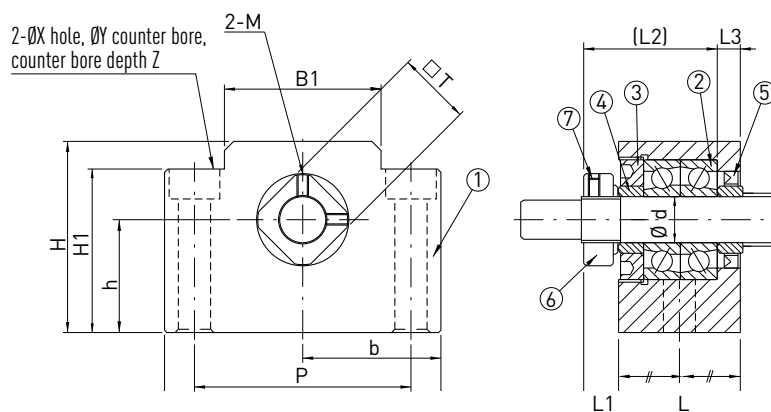
Bearing housings

5.5 Fixed bearing housing type EK

The axis height of the fixed bearing is matched to supported bearing EF.
The end machining suited to fixed bearing EK is the E2E-xx type.

Fixed bearing set EK includes:

- Steel bearing housing
- Angular contact ball bearing (2 pcs)
- Spacer (2 pcs)
- Radial lock nut



(1) Housing, (2) Bearing, (3) Retaining cover, (4) Support ring, (5) Seal, (6) Clamping nut, (7) Allen set screw

Type	Ball screw size	d	L	L1	L2	L3	B	H	b ± 0.02	h ± 0.02	B1	H1	P	X	Y	Z	M	T	End machi- ning	Bearing
EK-06	8, 10*	6	20	5.5	22	3.5	42	25	21	13	18	20	30	5.8	9.5	11	M3	12	E2E-06	706A
EK-08	10*, 12	8	23	7.0	26	4.0	52	32	26	17	25	26	38	6.6	11.0	12	M3	14	E2E-08	708A

*EK-06 suitable for ball screws 10x4
EK-08 suitable for ball screws 10x2.5

Dimensions in [mm]