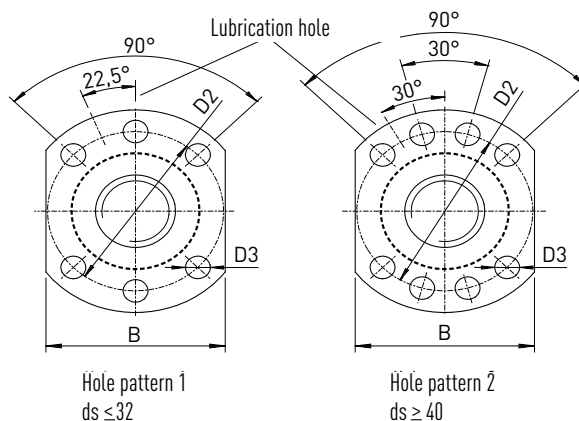
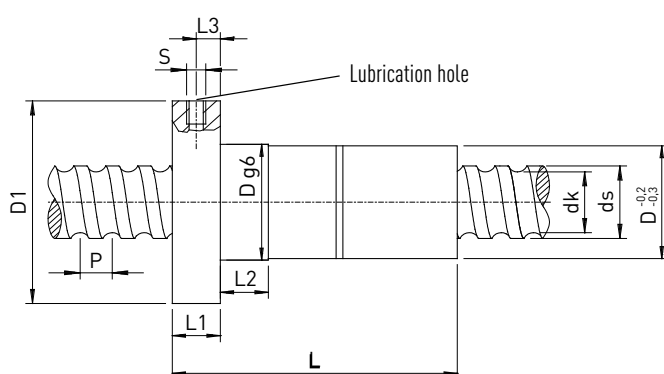


Ball screws Peeled

3.5 Preloaded flanged double nut DDB



Nut type	ds	P	D g6	D1	D2	D3	Hole pattern	L	L1	L2	L3	S	B	dk	C _{dyn} [N]	C ₀ [N]	Nut weight [kg]
DDB1605-R-3EF	16	5	28	48	38	5.5	1	80	10	10	5	M6	40	13.5	9600	12700	0.25
DDB2005-R-4EF	20	5	36	58	47	6.6	1	82	10	10	5	M6	44	17.5	13900	21800	0.42
DDB2505-R-4EF	25	5	40	62	51	6.6	1	95	10	10	5	M6	48	22.5	15600	27900	0.52
DDB2510-R-3EF	25	10	40	62	51	6.6	1	115	10	16	5	M6	48	21.0	24100	36200	0.57
DDB3205-R-5EF	32	5	50	80	65	9.0	1	95	12	10	6	M6	62	29.5	20700	43900	0.97
DDB3210-R-4EF	32	10	50	80	65	9.0	1	138	14	16	7	M6	62	27.8	40900	63200	1.01
DDB3220-R-2EB	32	20	50	80	65	9.0	1	138	14	16	7	M6	62	27.8	20300	26800	1.01
DDB4005-R-5EF	40	5	63	93	78	9.0	2	109	14	10	7	M8x1	70	37.5	22500	54600	1.55
DDB4010-R-4EF	40	10	63	93	78	9.0	2	150	14	16	7	M8x1	70	35.8	46800	82600	2.13
DDB4020-R-2EB	40	20	63	93	78	9.0	2	150	14	16	7	M8x1	70	35.8	23800	36400	1.80
DDB5005-R-5EF	50	5	75	110	93	11.0	2	112	16	10	8	M8x1	85	47.5	24900	69800	2.16
DDB5010-R-4EF	50	10	75	110	93	11.0	2	164	16	16	8	M8x1	85	45.8	52800	106800	2.50
DDB5020-R-3EB	50	20	75	110	93	11.0	2	196	16	16	8	M8x1	85	45.8	40000	76200	4.34
DDB6310-R-6EF	63	10	90	125	108	11.0	2	205	18	16	9	M8x1	95	58.8	84700	210800	4.34
DDB6320-R-4EP	63	20	95	135	115	13.5	2	270	20	25	10	M8x1	100	55.4	120000	250000	6.95
DDB8010-R-6EF	80	10	105	145	125	13.5	2	205	20	16	10	M8x1	110	75.8	93400	269200	4.71
DDB8020-R-4EP	80	20	125	165	145	13.5	2	280	25	25	12	M8x1	130	72.4	135000	322000	13.8

Dimensions in [mm]

- Nuts for peeled ball screws
- Dimensions acc. DIN 69051 part 5
- Double flanged nut
- Housings for nuts available
- Accuracy class P5 and P7
- Standard preload 7% C_{dyn}