

Linear Guideways

MG series

3.5.13 Dimensions of the MG rail

3.5.13.2 Dimensions of MGW_R

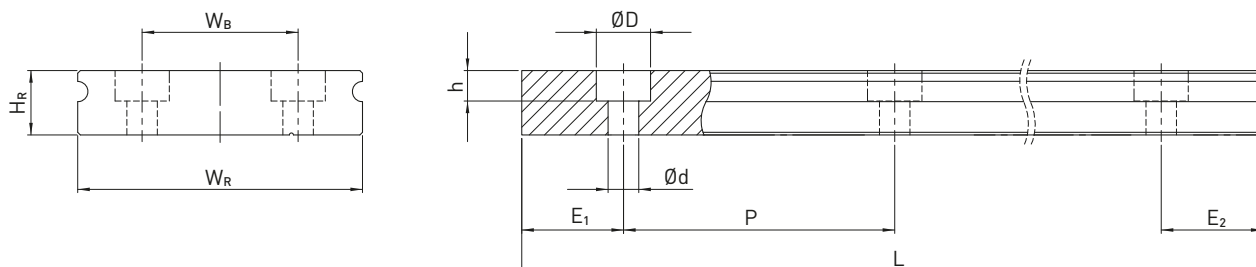


Table 3.91 Dimensions of rail MGW_R

Series/ size	Screws for rail [mm]	Dimensions of the rail [mm]							Max. length [mm]	Max. length $E_1 = E_2$ [mm]	Min. length [mm]	$E_{1/2}$ min [mm]	$E_{1/2}$ max [mm]	Weight [kg/m]
		W_R	H_R	W_B	D	h	d	P						
MGWR05R	M2.5 × 8	10	4.0	—	5.5	1.6	3.0	20	250	220	48	4	11	0.34
MGWR07R	M3 × 8	14	5.2	—	6.0	3.2	3.5	30	600	570	72	6	24	0.51
MGWR09R	M3 × 10	18	7.0	—	6.0	4.5	3.5	30	1.200	1.170	72	6	24	0.91
MGWR12R	M4 × 12	24	8.5	—	8.0	4.5	4.5	40	2.000	1.960	96	8	32	1.49
MGWR15R	M4 × 16	42	9.5	23	8.0	4.5	4.5	40	2.000	1.960	96	8	32	2.86

Note:

1. The tolerance for E is +0.5 to - 1 mm for standard rails and 0 to -0.3 mm for joints.
2. If the $E_{1/2}$ dimensions are not indicated, the maximum possible number of mounting holes will be determined under consideration of $E_{1/2}$ min.
3. The rails are shortened to the required length. If the $E_{1/2}$ dimensions are not indicated, these will be carried out symmetrically