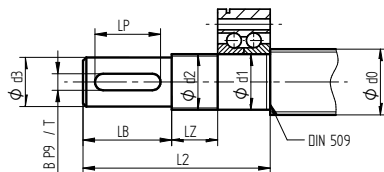


# Ball screws

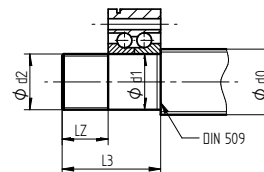
## Shaft ends

### 6.1 Standard shaft ends for SFA fixed bearing housings

Type S2



Type S3



Dimensional table for S2 and S3 shaft ends for SFA bearing housing

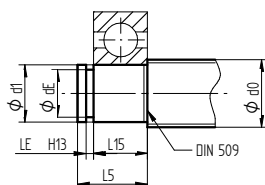
Type S2	Type S3	Bearing housing	d0	d1	d2	d3	L2	L3	LB	LZ	LP	B x X
S2-06	S3-06	SFA-06	8, 10, 12	6 h5	M6x0.5	5 j6	37	21	16	10	-	-
S2-10	S3-10	SFA-10	16	10 h5	M10x0.75	8 j6	50	30	20	12	14	2x1.2
S2-12	S3-12	SFA-12	20	12 h5	M12x1	10 j6	58	35	23	12	16	3x1.8
S2-17	S3-17	SFA-17	25	17 h5	M17x1	14 j6	73	43	30	20	20	5x3.0
S2-20	S3-20	SFA-20	25, 32	20 h5	M20x1	14 j6	76	46	30	20	20	5x3.0
S2-25	S3-25	-	32, 40	25 h5	M25x1.5	20 j6	96	46	50	21	36	6x3.5
S2-30	S3-30	SFA-30	40	30 h5	M30x1.5	25 j6	108	48	60	22	45	8x4.0
S2-40	S3-40	SFA-40	50	40 h5	M40x1.5	32 k6	135	55	80	24	56	10x5.0
S2-50	S3-50	-	63	50 h5	M50x1.5	40 k6	155	55	100	24	70	12x4.0
S2-60	S3-60	-	80	60 h5	M60x2	50 k6	177	67	110	25	70	14x5.0

S2 type without keyway - S21

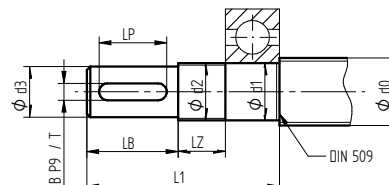
Dimensions in [mm]

### 6.2 Standard shaft ends for SLA simple bearing housings

Type S5



Type S1



Dimensional table for S5 and S1 shaft end for SLA bearing housing

Type S5	Type S1	Bearing housing	d0	d1	d2	d3	dE	L1	L5	L15	LB	LZ	LP	LE	B x T
S5-06	S1-06	SLA-06	8, 10, 12	6 j6	M6x0.5	5 j6	5.7 h10	31	8	6	16	10	-	0.8	-
S5-10	S1-10	SLA-10	16	10 j6	M10x0.75	8 j6	9.6 h10	39	12	9	20	12	14	1.1	2x1.2
S5-12	S1-12	SLA-12	20	12 j6	M12x1	10 j6	11.5 h11	43	13	10	23	12	16	1.1	3x1.8
S5-17	S1-17	SLA-17	25	17 j6	M17x1	14 j6	16.2 h11	60	15	12	30	20	20	1.1	5x3.0
S5-20	S1-20	SLA-20	25, 32	20 j6	M20x1	14 j6	19 h12	42	17	14	30	20	20	1.3	5x3.0
S5-25	S1-25	-	32, 40	25 j6	M25x1.5	20 j6	23.9 h13	83	18	15	50	21	36	1.3	6x3.5
S5-30	S1-30	SLA-30	40	30 j6	M30x1.5	25 j6	28.6 h12	95	20	16	60	22	45	1.6	8x4.0
S5-40	S1-40	SLA-40	50	40 j6	M40x1.5	32 k6	37.5 h12	119	22	18	80	24	56	1.85	10x5.0
S5-50	S1-50	-	63	50 j6	M50x1.5	40 k6	47 h12	142	25	20	100	24	70	2.15	12x5.0
S5-60	S1-60	-	80	60 j6	M60x2	50 k6	57 h12	155	28	22	110	25	70	2.15	14x5.0

S1 type without keyway - S11

Dimensions in [mm]