

# Linear Guideways

## WE/QW series

### 3.4.9 Dimensions of the WE rail

#### 3.4.9.1 Dimensions of WER\_R

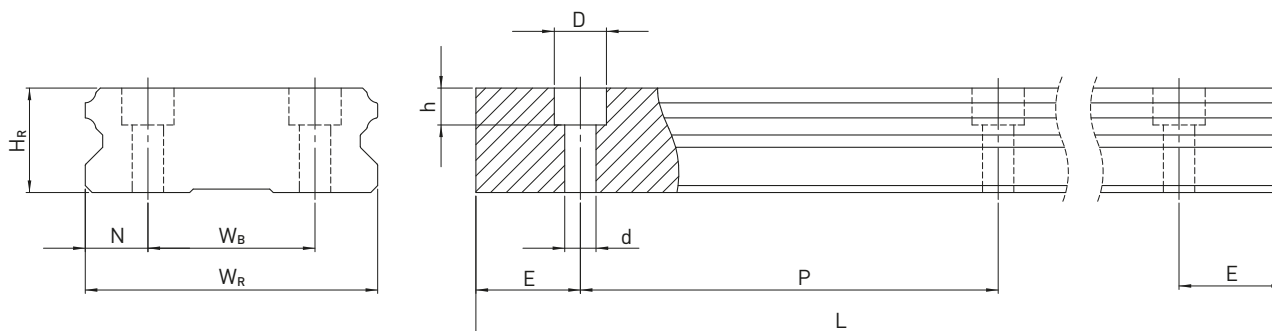


Table 3.70 Dimensions of rail WER\_R

Series/ size	Assembly screw for rail [mm]	Dimensions of the rail [mm]							Max. length [mm]	Max. length $E_1 = E_2$ [mm]	Min. length [mm]	$E_{1/2}$ min [mm]	$E_{1/2}$ max [mm]	Weight [kg/m]
		$W_R$	$W_B$	$H_R$	$D$	$h$	$d$	$P$						
WER17R	M4 × 12	33	18	9.3	7.5	5.3	4.5	40	4.000	3960	92	6	34	2.2
WER21R	M4 × 16	37	22	11.0	7.5	5.3	4.5	50	4.000	3950	112	6	44	3.0
WER27R	M4 × 20	42	24	15.0	7.5	5.3	4.5	60	4.000	3900	132	6	54	4.7
WER35R	M6 × 25	69	40	19.0	11.0	9.0	7.0	80	4.000	3920	176	8	72	9.7
WER50R	M8 × 30	90	60	24.0	14.0	12.0	9.0	80	4.000	3920	178	9	71	14.6