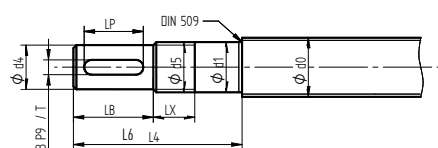


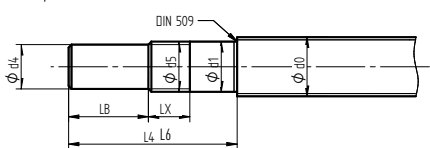
# Ball screws Shaft ends

## 6.7 Standard shaft end E2F for FK fixed bearing housing

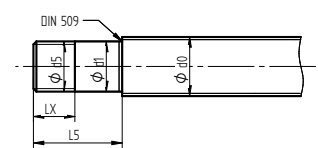
Type E2F1



Type E2F2



Type E2F3



Dimensional table for E2F shaft ends for FK bearing housing

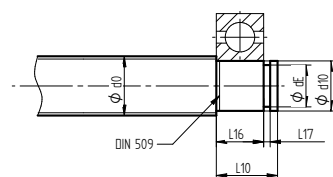
Type	Bearing housing	d0	d1	d4	d5	LB	LX	L4	L5	LP	B x T
E2F_-06	FK-06	8, 10*	6 h6	4 j6	M6x0.75	8	8	36	28	-	-
E2F_-08	FK-08	10*, 12	8 h6	6 j6	M8x1	9	10	41	32	6	2x1.2
E2F_-10	FK-10	12	10 h6	8 j6	M10x1	15	16	51	36	9	2x1.2
E2F_-12	FK-12	16	12 h6	10 j6	M12x1	15	14	51	36	9	3x1.8
E2F_-15	FK-15	20	15 h6	12 j6	M15x1	20	12	67	47	12	4x2.5
E2F_-17	FK-17	25	17 h6	15 j6	M17x1	23	17	81	58	15	5x3.0
E2F_-20	FK-20	25	20 h6	17 j6	M20x1	25	15	87	62	15	5x3.0
E2F_-25	FK-25	32	25 h6	20 j6	M25x1.5	30	20	106	76	16	6x3.5
E2F_-30	FK-30	40	30 h6	25 j6	M30x1.5	38	25	110	72	23	8x4.0

\*E2F\_-06 suitable for ball screws 10x4  
E2F\_-08 suitable for ball screws 10x2.5

Dimensions in [mm]

## 6.8 Standard shaft end E5F for FF simple bearing housing

Type E5F



Dimensional table for E5F shaft end for FF bearing housing

Type	Bearing housing	d0	d10 j6	dE -0.2	L10	L16	L17 H13	Bearing
E5F-08	FF-06	8, 10	6	5.7	9	6	0.8	606ZZ
E5F-10	FF-10	12	8	7.6	10	7	0.9	608ZZ
E5F-12	FF-12	16	10	9.6	11	8	1.15	6000ZZ
E5F-15	FF-15	20	15	14.3	13	9	1.15	6002ZZ
E5F-17	FF-17	25	17	16.2	16	12	1.15	6203ZZ
E5F-20	FF-20	25	20	19.0	19	14	1.35	6204ZZ
E5F-25	FF-25	32	25	23.9	20	15	1.35	6205ZZ
E5F-30	FF-30	40	30	28.6	21	16	1.75	6206ZZ

Dimensions in [mm]