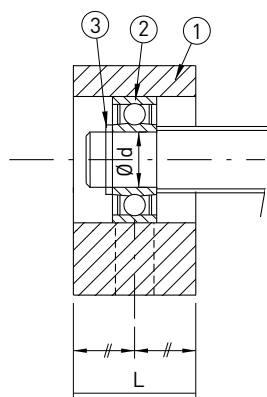
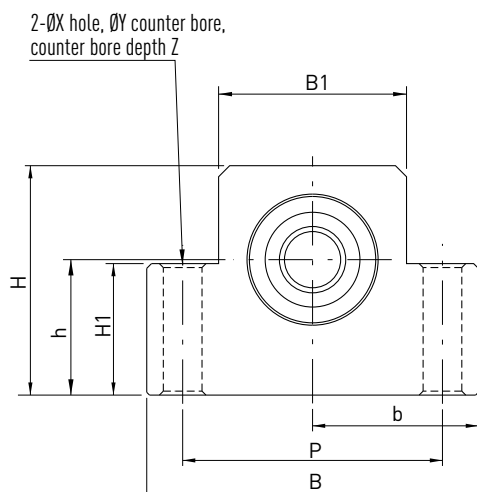
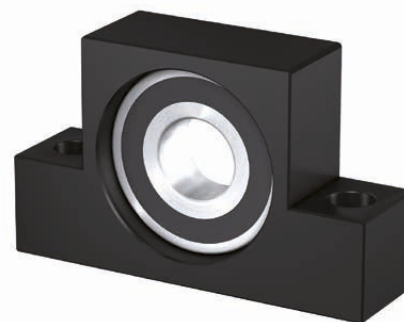


Ball screws Bearing housings

5.6 Simple bearing housing type EF

Simple bearing set EF includes:

- Steel bearing housing
- Radial bearing
- Circlip



(1) Housing, (2) Bearing, (3) Circlip

Type	Ball screw size	d	L	B	H	b ± 0.02	h ± 0.02	B1	H1	P	X	Y	Z	End machi- ning	Bearing
EF-06	8, 10*	6	12	42	25	21	13	18	20	30	5.5	9.5	11	E5E-06	606ZZ
EF-08	10*, 12	6	14	52	32	26	17	25	26	38	6.6	11.0	12	E5E-08	606ZZ

*EF-06 suitable for ball screws 10x4
EF-08 suitable for ball screws 10x2.5

Dimensions in [mm]